

# ACITYA

■ BUSINESS ■ CREATIVITY ■ TECHNOLOGY

ISSN 977-2527-6786  
Vol. 5 No.1 January 2018

A central illustration of a green Earth with blue oceans, surrounded by various food items and medical symbols. A blue line with small circles connects the Earth to a brown medical bag with a red cross in the bottom right. Other items include a fried egg, a red kidney, a strawberry, a carrot, a slice of watermelon, a slice of orange, a wedge of Swiss cheese, and several pills (green and white, orange, pink).

**Food Secured  
Health  
Improves**



9 772527 678062



**Director**  
Rector  
Vice Rector IV  
Telkom University

**Editorial Board**  
Angga Rusdinar  
Eka Widhi Yunarso  
J. Catur Prasetyawan  
Ridwan Sukma Al Busyaeri

**Editorial in Chief**  
Angga Rusdinar

**Editorial Manager**  
Eka Widhi Yunarso

**Editorial Secretary**  
J. Catur Prasetyawan

**Reportage**  
Runik Machfiroh  
Tika Rahmawati

**Graphic Design / Layout**  
Gerald Gunawan

**Circulation and Add**  
Lia Yulianti

ISSN 977-2527-6786

**Editorial Address**  
Bangkit Building 3rd Floor  
Telkom University  
Bandung Technoplex  
Email : ppm@telkomuniversity.ac.id  
Web : ppm.telkomuniversity.ac.id  
Mobile : 082219364346  
Telp : 022 - 7564500

**Media Consultant**  
Dinamika Komunika  
www.dinamikakomunika.com

## CONTENT

### 2018 The Year of Research and Community Service



**10**  
**INNOVATION**

MyGlucoby :  
Checking the  
Blood Sugar is Not  
Painful Anymore

Hbey :  
Preventing Anemia  
through Eyes **14**

Egg Q :  
Checking the Quality  
of Eggs Objectively **18**



**32**

**RESEARCH GROUP**  
KK Art, Aesthetics & Practices  
Taking Traditional  
Artefacts to the Global  
Market

Satria Mandala,  
B.Eng., M.Sc., Ph.D  
**Focused on**  
**Working, Carrying**  
**Out the Three**  
**Pillars of Higher**  
**Education**



**PROJECTION**

BTP  
Supports Tel-U  
to be a GEU **7**

D3 Hotel Management  
Laboratory **LABORATORY**

Preparing Human Resources  
for Tourism Sector

**REFERENCE**

JRSI  
Paper and Reviewer Cooperation  
Exchange

**40**

**CONFERENCE**

2<sup>nd</sup> iCOPE 2017

The Power of Big Data and the  
Fourth Industry

**44**

ICoDIS

The Meeting Place for the  
Information Science Researchers

**48**

**52**

**ACTUALIZATION**

Researchers Should Synergize with Each Other

**56**

To Increase Literacy with Publication

**58**

Paper Publication is Like "Bread & Butter"

**61**

The Indexing Directory of Open Access  
Journals (DOAJ) Offers DOAJ Seal

**62**

Tel-U has Good Management  
as Supported by ISO

**64**

Self-Help Builds a Village  
to be Independent and Advanced

**66**

Do not be Afraid to Do RESEARCH!

**68**

Communicate the Products to the Community

**70**

Choose a Journal that Suits the Research Topic!

**72**

Bibliography Corresponds to the  
Reference, the Paper is Easy to be Cited

**74**


Plagiarism, It is Better to Prevent It  
Rather than Making Mistakes

**INTELLECTUAL PROPERTY**

Tel-U Strengthens  
the Intellectual Property Clinic

**78**

# FOOD - HEALTH AND NATIONAL PROSPERITY



Indonesia had once achieved rice self-sufficiency under the New Order, in 1984 to be exact. Unfortunately, it did not continue. Consequently, the food security remains a big issue for the national prosperity. And so is the health.

Therefore, the Ministry of Research, Technology and Higher Education (Kementerian Riset, Teknologi dan Pendidikan Tinggi, Kemenristekdikti) initiated a featured program in 2017, i.e. Food Security, Health & Medicine, Security and Defense, Raw Material, Advanced Material, Energy, Transportation, as well as Information and Communication Technology (ICT). The eight programs are then taken as the object of the study of Prospective Technology Based Start-Up (Calon Perusahaan Pemula Berbasis Teknologi, CPPBT) scheme mandatorily carried out by different universities in Indonesia,

including Telkom University (Tel-U).

It is also through some research in higher education that the government, i.e. through Kemenristekdikti, expects to find some solution in facing different problems in food and public health. It is because the two factors directly relate to the public needs and determine the national prosperity.

Food security turns to be one of the indicators for the decrease in the poverty rate in Indonesia. However, in terms of health, Indonesia still has a high number of mortality. The availability of health facilities and medicine has not been equal yet. It is expected then that through the studies conducted by universities, the two problems can be handled.

Tel-U has likely given its contribution in this kind of matter. In 2017, Tel-U participates in CPPBT research scheme by

its three studies of myGlucoby, Hbey and EggQ. The first two are breakthrough in health technology while the rest is that in food technology. MyGlucoby is a device and application to check blood sugar used to indicate Diabetes Mellitus (DM) in a non-invasive way. Hbey is an application to check anemia through the eyelid while EggQ is a device to check the freshness and quality of chicken eggs before they are consumed.

Above all, the government has facilitated higher education to give a bigger contribution in handling different problems found in Indonesia. One of the attempts is by giving the product oriented CPPBT research scheme grant to be then used by the society. Besides the scheme, there are some other schemes which can be used by the researchers in universities to help the government in handling any national problems. ❖

# 2018

## THE YEAR OF RESEARCH AND COMMUNITY SERVICE

As a higher education institution, Telkom University (Tel-U) should always ensure its sustainability for the future time. In accordance with its visions and missions, this campus has set its own goals, i.e. to be a World Class University (2018), World Class Research University (2023), National Excellence Entrepreneurial University (2028), World Class Entrepreneurial University (2033), and Global Entrepreneurial University (2038). It certainly needs an excellent preparation, including the research aspect.

According to the Vice Rector IV of Research and Student Affairs, Dr. Rina Pudji Astuti, the preparation has been started since the establishment of Tel-U in 2013. However, in 2018, the research aspect is getting more reinforced, in order to support its achievement in 2023 and the following years.

"The reinforcement is in line with the Strategic Plan of Tel-U, to have some breakthrough for the future. Besides having the Research Quality Excellence in 2018, Tel-U has also started itself to be a Global Entrepreneurial University. Therefore, its strategies should also be aimed at having the two things at once. This year, 2018, Tel-U is developing Global Research and Community Services Program (GRS-Pro). This program is an attempt to strengthen the research and community service as well as accelerate the realization of the success indicators," she said.

There are a number of indicators to be improved to attain Research Quality Excellence. They include the number of publication, indexed journal, intellectual property, and so on. The number of publications reached by Tel-U in 2017 has been more than 1,000 articles. This year, this campus has also got "A" for the accreditation towards higher education and 3 stars from Q-Star. The last point, however, is the best achievement for Tel-U considering that Q-Star is an international rank system assessing an institution in detail which involves the education programs, facilities,



**Dr. Rina Pudji Astuti**





graduate employability, social responsibility, inclusivity, etc. Unfortunately, the research aspect has not reached 5 stars from Q-Star.

"There are several indicators set by Q-Star pertaining to the improvement in research, including paper per faculty or art, citation per paper, academic reputation, and claim academic expert of its lecturers. It is in line with the performance required to be measured or prepared to have the Quality Research Excellence, i.e. human resources, research fund, research output, research management, study/research center, laboratory, and business unit of the research, which is currently supported by BTP," said Rina

Rina said further that though there are a number of publications, the number of indexed international journals should still be increased. Particularly, if it is compared to the number of human resources at Tel-U, mainly those with Doctoral title who also has an Academic Functional Position at the level of Lector or Head Lector. Therefore, in 2018, the

publication in indexed international journal will be more optimized.

Rina said that there are three aspects that should be reinforced in reaching the Quality Research Excellence, namely human resources, system and tools. In the case of human resources, their contribution to the research and community service should be improved and optimized. Their competence should also be concerned about, including the improvement of JFA, professionalism, quality or being qualified, as well as being able to collaborate and evaluate (evaluator).

In terms of system, however, it is marked by the revision in the Organizational Structure and Working Procedure (Susunan Organisasi & Tata Kerja, SOTK). Among them are the affiliation of BTP and the addition of the number of Research Center (RC) from 2 units to be 5. The five RCs are Advanced Wireless Technology (AdWitech), ICT Business & Public Policy, Center for Digital Collaboration of Unified Business Ecosystem, e-Supply Chain Research Center, and Telkom University Internet of Things Center.

"The five RCs will support all research at Tel-U, i.e. along with PPM collaborating with Tel-U partners, either in or outside the country. RCs at Tel-U may later support the indicators required by Q-Star, i.e. academic reputation and claim academic expert for the research lecturers here. However, for the tools, there will be a road map for the science, product and competence oriented research," continued her.

Rina expected that the Tel-U researchers will be able to raise their contribution toward industry. Moreover, Tel-U has already had some RCs equipped with some researchers expert in their field area. For business aspects, Tel-U has now been supported by BTP so that the researchers will not have some trouble when the results of their studies are going to be commercialized.

"To build Entrepreneurial University, the researchers should also be aimed at having the intellectual property and the products useful for human kinds. Some research is undeniably fundamental for improving the science and the competence of the researchers. It should keep running, so that we are not

## PROJECTION

left behind. There is also a product oriented applied research. All of the research will be supported by RCs. Meanwhile, the development of the business of the product can be supported by BTP,” she said.

### Research Should be inLine with the Community Service

The other aspect to be improved is the community service. Rina said that as an Information and Communication Technology (ICT) based campus, it is the time for Tel-U to give some contribution to the industrial society, community and government. The three elements should be the recent targets of the community service of Tel-U, i.e. to give some more real solution for different problems in society.

“Community service also has some important roles in educating, consultation and other different matters either for the industry, community and government. The lecturers of Tel-U, for instance, who

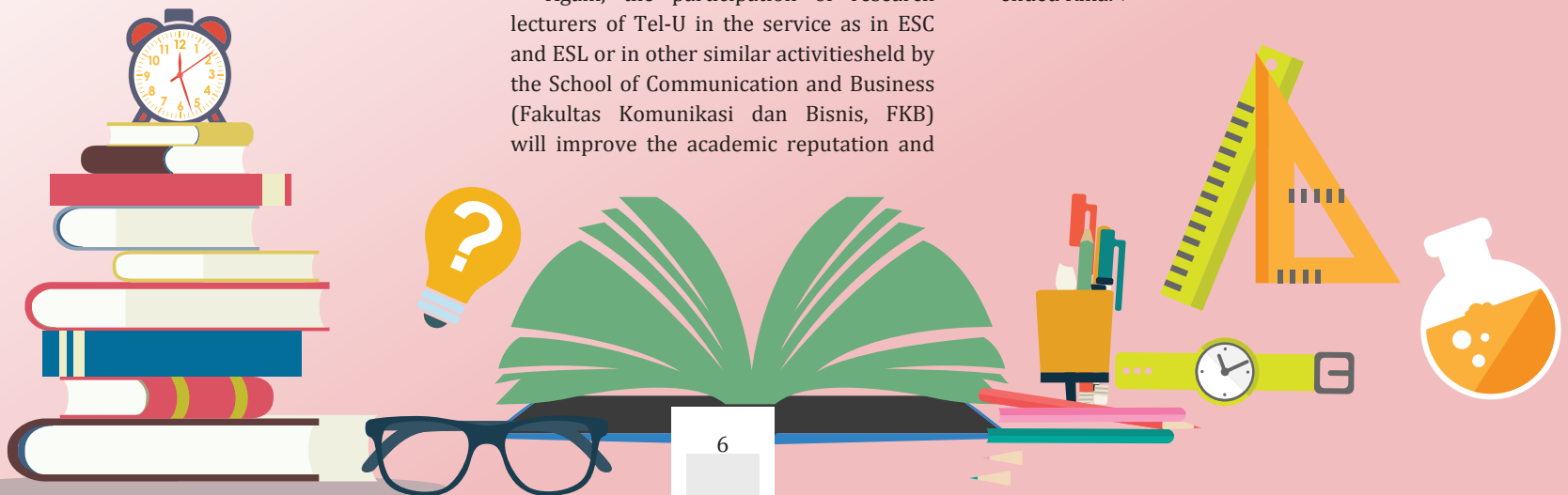
actively involve in an association, help the government in making some policies in telecommunication. One of the examples in the collaboration between research and community service is the cooperation between the School of Electrical Engineering of Tel-U and other universities as with Hanbat National University of South Korea taken place in Lembang, Bandung which was aimed at helping any problems in farming. This cooperation also involves The West Java Research and Development Center for Farming (Puslitbang Pertanian Jawa Barat). The other examples are Engineering Service Community (ESC) program and Engineering Service Learning (ESL) taking place at Kareumbi Masigit, Cicalengka, West Java in 1-12 August 2017 and the one in Kampung Bulagir, West Java in 3-26 November 2016. It can be seen that the researchers develop a system and product that can provide some potential solutions to any problems. ESC and ESL, however, involve more than 30 lecturers and 60 students,” explained Rina.

Again, the participation of research lecturers of Tel-U in the service as in ESC and ESL or in other similar activities held by the School of Communication and Business (Fakultas Komunikasi dan Bisnis, FKB) will improve the academic reputation and

claim academic expert. It is because that the programs can also mean that there is some acknowledgement for the competency in the expertise of the researcher lecturers of Tel-U among the society.

Therefore, Rina confirmed that the community service program will be focused on real projects which are also useful for the society, particularly in ICT, in line with the competence of Tel-U. However, Tel-U will not take all of the technology trainings away from the community service.

Rina is optimistic that Tel-U will reach its visions and missions in the future. “I am optimistic; Tel-U will reach the Research Quality Excellence considering the potentials it has, including strong resources, determined academicians, well established system, futuristic strategic plans and well established reputation. Besides, we also see a big potential the students have to get involved. The number of students can be essential and influential in the establishment of the research and the community service,” ended Rina. ❖





Prof. Adiwijaya, M.Sc

## BTP Supports Tel-U to be a GEU

In order to realize its major plan to be a research university in 2018, Telkom University (Tel-U) has invited Bandung Techno Park (BTP) which was previously under the authority of the Telkom Education Foundation (Yayasan Pendidikan Telkom, YPT) to join. The affiliation does not only intend to strengthen the research aspect, but also to build the entrepreneurship atmosphere which is also the target of Tel-U for 2018, i.e. to be a Global Entrepreneurial University (GEU).

Having been established in 2010, BTP was then continued to cooperate with industry, community and government as with different companies related to PT Telkom Indonesia, different associations related to techno park, the Ministry of Industry, the Ministry of Research Technology and Higher Education (Kementrian Riset Teknologi dan Pendidikan Tinggi, Kemenristekdikti), etc.

"BTP is announced by Kemenristekdikti as a reference for the Sciences & Techno Park (STP) in Indonesia at the establishment of 100 STPs written in the Nawa Cita (Nine Prioritized Agenda) of Jokowi, the President of the Republic of Indonesia. Therefore, we believe that this affiliation will bring some concrete benefits to Tel-U, particularly in improving the entrepreneurship atmosphere within the campus," said the director of BTP, Prof. Adiwijaya, M.Sc.

Though it has only joined for a short period of time, BTP has already had some modern research tools used to develop some applied research directly giving some benefits to the society. As a techno park, BTP plays an important role in providing an ecosystem for the development of regional economy through some incubation of Technology Based Tenant/



## PROJECTION

Start-Up (Perusahaan Pemula Berbasis Teknologi, PPBT). Through this affiliation, Tel-U academicians can have a wider access and bigger benefit, i.e. from the incubation of BTP, so that it can be synergized in creating a qualified entrepreneur.

It is because recently BTP has 15 tenants in which 9 of the tenants are being incubated through IBT funded by Kemenristekdikti where the 6 of them are from outside parties and the 3 others are from Tel-U. The incubation involves some coaching, some enrichment in business concepts, as well as some supports and help in legal aspect required for the establishment of start-up (PT).

Several programs and agenda are carried out by BTP and Tel-U to intensify the entrepreneurship atmosphere including providing some Entrepreneurship and Technopreneur courses, business plan competition, and incentive program of research downstreaming.

“In the incentive program of research downstreaming, we along with the Directorate of PPM assist the research team of lecturers who want to bring their research product technology readiness to the commercialization. The outreach towards downstream research as well as the tenants is on going. This affiliation involves some administrative compliance so that it will be easier for us in terms of administration and financial process since we are in the same organization. We hope that the capacity of this project can be increased in terms of the



Ministry of Research, Technology and Higher Education RI, M. Nasir, giving award Anugerah Iptek Widya Kridha for BTP to Prof. Adiwijaya, M.Sc, August 10, 2017 in Makassar.

Foto. Dok. BTP

number of Tel-U researchers involved,” he continued.

Besides incubation, BTP is also active in giving some technological solutions for industrial products either the ones independently developed or created by start-ups. It is also active in providing some facilities like an office area for IT practitioners, freelancers and other start-ups requiring either a dedicated, co-working or virtual office.

Therefore, the wide network BTP has related to industry can be used by the researchers or students of Tel-U in commercializing their research. BTP has also had some advices on the product specifications needed by the society and industry in BTP marketing network. This information is useful, i.e. for the researchers

in order to adapt their applied research topic that will be potentially used in the society.

“It is common that research is conducted through product validation so that it will lead to a qualified product in accordance with the scientific theories. However, the products should not only be qualified but also useful for the society. Therefore, we did some market validation to get some feedback from the society related to the products they need, the drawbacks of the products, etc. We do not want to find that we know that the products are good but they are not in line with the market demand,” said Adiwijaya.

Besides cooperating with the researchers from Tel-U, BTP also develops some commercial products with other parties like Loraid, a long range RFID



(Radio Frequency Identification) based detection system solution which is high in mobility and accuracy and able to detect an object from the range of 11 meter and read 200 ID tags per second in real time. This product has been implemented for Asset Management System, Presence System, Security System and Event Management System in several companies. Besides, there are also e-learning product (Studia), low energy incinerator (Insinerator), front office robot (Nova), etc.

Due to its contribution and dedication in technology and innovation reinforcement in society, BTP has been awarded with Anugerah Iptek Widya Kridha in 2017 by the government through Kemenristekdikti. This award is an appreciation from the government for a non-government institution and social community due to its dedication and contribution in the innovation reinforcement in society. The award is directly given by the Minister of Ristekdikti M. Nasir in the commemoration of The National Technology Revival Day (Hari Kebangkitan Teknologi Nasional, Harteknas) in Makassar, 10 August 2017.

To the present time, Tel-U researchers have given their contribution in the publication oriented research. Adi said that it is the time for the researchers to enhance their research contribution in applied research so that the products can be directly used by the society. However, it is also admitted by Adiwijaya that the researchers also concern about the claim

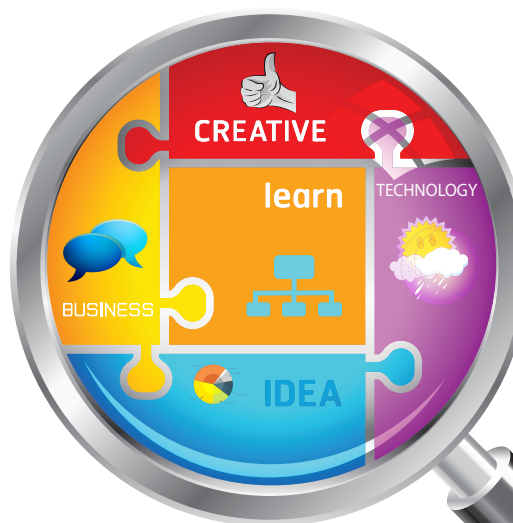
for the Intellectual Property (Kekayaan Intelektual, KI), particularly in the case of patents for the products resulted from the research conducted under the cooperation with BTP.

"We want to clarify, BTP never and will not make a claim to be the inventor of the products developed by the researchers. By this affiliation, it is hoped that there will be some trust and synergy for our advancement. One of the ways to increase the engagement is by forming Research Group (RG) in BTP, i.e. as a technological solution to be used by industry which involves some collaboration from researcher

the industry and society," he said.

Adiwijaya hoped that BTP will be the motor and will strongly synergize more strongly in the development of the applied research in downstreaming the research at Tel-U. BTP has also had its own authority to find its own financial sources under the coordination of the Rector of Tel-U. According to Adiwijaya, this autonomy is important to grow the organization so that the innovation will always be independently innovative and sustainable.

"We hope that we can give some contribution to increase the awareness of Tel-U researchers pertaining to the applied research, as the potential and opportunity for non tuition fee financial source. It has been proven by best universities in the world and has produced many start-ups or Company Spin-offs due to the research conducted by them. Therefore universities will possess some shares and dividends from the spin-offs. It is a real initial step in realizing the Research Quality Excellet to be a Global Entrepreneurial University. In one condition, the internal of Tel-U (including BTP) should keep the mutual trust and conducive atmosphere," he said. ❖



lecturers and students who will get either some financial benefits or intellectual property when the technological solution is used by





# MyGlucoby

## *Checking the Blood Sugar is Not Painful Anymore*

Diabetes Mellitus (DM) has become one of the main causes of death in Indonesia. Indonesia has become the 7th country of the highest number of the DM patients in the world since 2014. The threat of this disease is very real. Death haunts the patients if it is not handled soon. If one has been diagnosed to have DM, he cannot be cured. He can only control his blood sugar level so that it can be sustained. Therefore, besides preventing it, the ability to control the blood sugar level that can indicate DM is important to have.

To the present time, the checking on blood sugar aimed at finding DM is conducted by using a digital device using an invasive method. It makes some DM patients feel uncomfortable in checking the blood sugar. However, the checking should be taken routinely, particularly for those who have been indicated to have DM.

Pertaining to this, researchers from Telkom University (Tel-U) did some research to create a non-invasive (requiring no puncturing of the skin) device used to measure the blood sugar. This study has passed the Prospective Technology Based Start-Up (Calon Perusahaan Pemula Berbasis Teknologi, CPPBT)

s c h e m e 2 0 1 7  
from the Ministry of Research Technology and Higher Education (Kementerian Riset Teknologi dan Pendidikan Tinggi, Kemenristekdikti).

The device called as MyGlucobby consists of a hardware used to check the blood sugar in the arm and an android based application installed in smartphone in checking the records stating the blood sugar level of the patient that have been read by the device. This device modifies the use of oxymeter sensor by using photodiode and infrared working principles. The sensor

reads the light intensity that can be influenced by the number of glucose molecules in the blood sugar. The sensor is used at the tip of the patient's finger that can ray some light. The patient's finger radiated by the sensor light can measure the intensity of red light of the blood then can be processed by the Arduino based microcontroller converted into the blood sugar level in milligram/deciliter. This system is integrated with Internet of Things (IoT) software in the form of an android based application via Bluetooth. Therefore, the record can be seen anytime.

Within the study, the device and application were tested to more than 300 people. The result shows that the device has a high accuracy to the patients with the blood sugar level of 0 – 250 mg/dl. However, this device has not been able to read the blood sugar level of those with a high level of blood sugar (> 400-500). Therefore, this device has not been able to replace the device used to be used by doctors in checking the blood sugar as well as that in the laboratory.



- Major :  
**Bachelor of Telecommunication Engineering**
- Title :  
**Glucometer - Non-invasive blood sugar measuring devices**
- Researcher :  
**Inung Wijayanto, S.T., M.T.  
Hilman Fauzi TSP, ST., MT.  
Ir. Rita Magdalena, MT  
Raditiana Patmasari, ST., MT.  
Yunendah Nur Fuadah, ST, MT**
- Scheme :  
**Potential New Technology-based Companies Phase I 2017**
- Fund :  
**IDR 228,300,00**

- 
- Major :  
**Bachelor of Telecommunication Engineering**
  - Title :  
**Hbey - Application of non-invasive hemoglobin level measurement for detection of anemia in pregnant women**
  - Researcher :  
**Hilman Fauzi TSP, S.T., M.T.  
Ir. Rita Magdalena, MT  
Azizah, ST., MT.  
Yunendah Nur Fuadah, ST, MT**
  - Scheme :  
**Potential New Technology-based Companies Phase I 2017**
  - Fund :  
**IDR 173,420,000**
-





Open table for checking blood sugar levels at Tel-U environment.

Foto. Doc. Inung

However, MyGlucoby can be used as the Early Warning System (EWS) device for those who want to prevent DM.

Along the process, the prototype of MyGlucoby has been refined for five times so that it has finally reached the technology readiness level of 7. However, to be marketed to the public, MyGlucoby should pass a clinical test since it is required for a health device and certification test. Therefore, MyGlucoby is being clinically tested at Medical Laboratory of Health Science Academy of Rajawali (Sekolah Tinggi Ilmu Kesehatan Rajawali), Bandung.

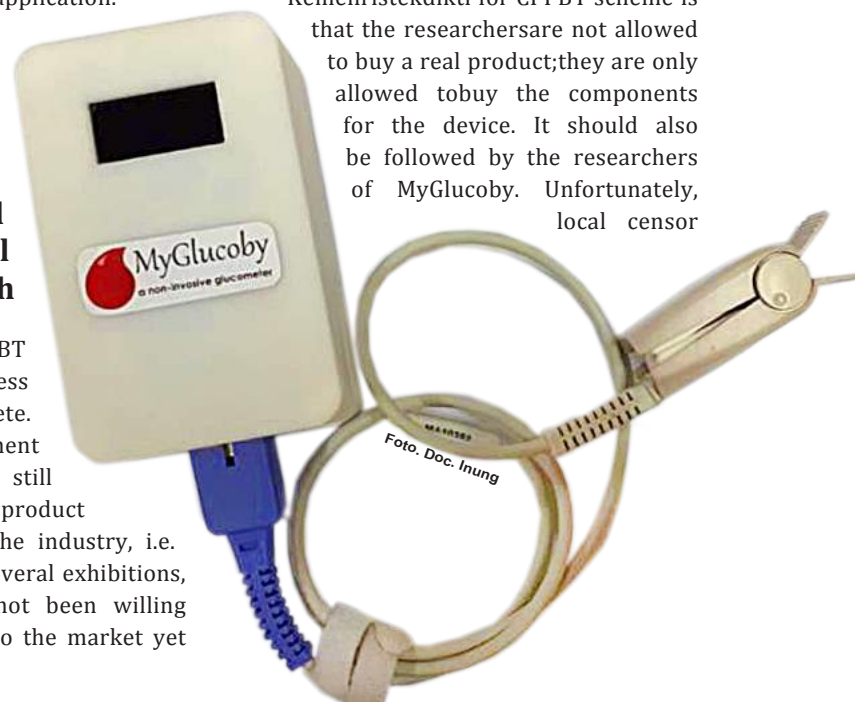
MyGlucoby is one of the products targeted to be a part of ICT based healthy life style. It is because that in the era of IoT, people will do different things more easily by technological support like in shopping. It is also possible for those related to the health.

This device can be used by doctors as a reference in finding the patient record, particularly the one pertaining to DM. The application can recently be freely

downloaded at Google Playstore. However, the device cannot be freely accessed. For those who want to check the blood sugar and have their own record, they should use the device as well as the application.

### Even With Imported Components, the Local Component Level (TKDN) Will Remain High

Recently, the CPPBT scheme research process has already been complete. However, the development of this product is still ongoing. Though this product has been targeted by the industry, i.e. when it is involved in several exhibitions, the researchers have not been willing to release the product to the market yet



since it has not passed the clinical and circulation permit tests.

For the product and market validation purpose, the product has just been made into 5 prototypes using the raw material of 3D printing casing and charged system battery. The plan to change the casing with plastic material still faces some problems including the high cost of molding that requires the minimum production size of 1,000 pieces. The development project of MyGlucoby will involve some different sensors added to check the cholesterol in blood. In terms of legal matter, this product has been registered for the copyright, brand and the industrial design.

One of the regulations of Kemenristekdikti for CPPBT scheme is that the researchers are not allowed to buy a real product; they are only allowed to buy the components for the device. It should also be followed by the researchers of MyGlucoby. Unfortunately, local sensor



components are still hard to find, so that they should by any means import it. However, the Local Component Level (Tingkat Komponen dalam Negeri, TKDN) of the product is still in the level of 80% compared to that of the imported component. Therefore, the reviewers for the Monitoring Evaluation do not take it as a problem, as long as the real product is without any doubt made and programmed inside the country. It is because that some components including sensor and microcontroller have only been available in other countries.

In order to introduce the product to the public and industry, MyGlucoby has been involved in a mandatory exhibition, Innovator Innovation Indonesian Expo (Inovator Inovasi Indonesia Expo, I3E) 2017 in Surabaya, Bandung ICT Expo 2017 at TUCH Telkom University and Aperti BUMN Expo 2017. The socialization has also been carried out in the open table to check the blood sugar record of 100 respondents from Tel-U as well as from several health institutions like Community Health Centers (Puskesmas). If the product has passed the clinical test and certification test, it is not impossible to propose it to the PPBT scheme research that requires the product to be ready to be marketed. ❖

*Abstracted from an interview and a study entitled "Glucometer: Non-Invasive Blood Sugar Meter" by Inung Wijayanto and MyGlucoby team.*



## Profile of the Head of Research Team

**INUNG WIJAYANTO, ST., MT.**, is a fulltime lecturer at the School of Electrical Engineering (Fakultas Teknik Elektro, FTE) of Telkom University (Tel-U). Born in Sukoharjo, 5 December 1986, Inung completed his bachelor degree in 2008 at Telkom Institute of Technology (Institut Teknologi Telkom, IT Telkom) in Telecommunication Engineering. He also completed his master degree in the same campus in 2011, in the same field.

One of the research projects he had ever conducted when he was appointed as the Manager Assistant of Product Validation at Bandung Techno Park (BTP) is RFID (Radio Frequency Identification) based parking system which has been real implemented.

The research he had ever carried out includes the Detecting System on Brain Signal Configuration Caused by Child Sexual Abuse, Designing and Implementing Remote Sensing Payload System of Nanosatellite in Establishing Nanosatellite Reliability in Higher Education, Intelligent Plate Number Recognition (iPRO), the Design and Implementation of 3D Laser Scanner system, etc. ❖

## EXTERNAL FUND RESEARCH 2017

### SCHOOL OF ELECTRICAL ENGINEERING

- Major :  
**Bachelor of Telecommunication Engineering**
- Title :  
**EggQ - An egg-based quality and freshness detection apparatus**
- Researcher :  
**Ledy Novamizanti, SSi, M.T.  
Dr. Bambang Hidayat  
Irma Syafitri, MT  
Nur Ibrahim, ST., MT.**
- Scheme :  
**Potential New Technology-based Companies Phase I 2017**
- Fund :  
**IDR127,200,000**

- 
- Major :  
**Master of Telecommunication Engineering**
  - Title :  
**Brain Signal Configuration Detection Tool Due to Sexual Violence in Children**
  - Researcher :  
**Dr. Ir. Rina Pudji Astuti, M.T.  
Dr. Levy Olivia Nur, S.T., M.T.  
Inung Wijayanto, S.T., M.T.  
I Nyoman Apraz Ramatryana, S.T., M.T.**
  - Scheme :  
**InSinas 2017**
  - Fund :  
**IDR100,000,000**

- 
- Major :  
**Bachelor of Physics Engineering**
  - Title :  
**Synthesis and Pore Structure model on Carbon Nanopore of Coconut Shell as Capacitor Electrode**



# Hbey Preventing Anemia through Eyes

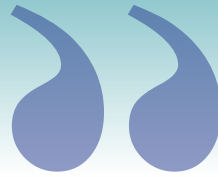


Anemia or the red blood cell deficiency has often been taken for granted or even unrealized by the patients. No wonder the number of anemia patients in Indonesia is high, reaching the level of 30 - 55% of the total number of 500-600 million patients in the world. Anemia is commonly caused by the nutritional deficiency causing the abnormal haemoglobin (Hb) level in the blood.

**I**n fact, Hb plays an important role to take oxygen into human's body. The anemia patients will lose their appetite, have some headaches and sluggish feeling as well as decrease the productivity to the level of 20%. The fact is anemia also affects the IQ of kids. Even, anemia is dangerous for pregnant mothers and can cause the death after birth.

At the present time, the Hb level test is conducted invasively, i.e. taking the blood sample by hurting a body part. In fact, there is another way to check the Hb level without hurting the body. One of the methods is by checking the condition of the lower eyelid (conjunctive). Therefore the researchers of Telkom University (Tel-U) try to develop a product to measure the Hb level by processing the digital image of conjunctive integrated to smartphone. This study is conducted since 2015 through different schemes that the last scheme was conducted through Prospective Technology Based Start-Up (Calon Perusahaan Pemula Berbasis Teknologi, CPPBT) scheme research 2017 funded by the Ministry of Research, Technology and Higher Education (Kementerian Riset Teknologi dan Pendidikan Tinggi, Kemenristekdikti).

The product resulted from the research is an application called as Hbey which is recently available in android appstore and can be freely download. The development of Hbey application can be divided into different research steps including the test, data validation and analysis as well as the



Hbey has been listed in copyright owners at the Ministry of Law and Human Rights (Kementerian Hukum dan HAM, Kemenkumham) on October 12, 2016 by the record number of 084476.

packaging process of the application to be then accessed by the application users. Hbey is a research work product involving a number of lecturers from the group of expertise of Information Signal Processing of the School of Electrical Engineering (Fakultas Teknik Elektro) and the students of IMV (Image Processing and Computer Vision) laboratory research program.

Hbey designedly offers two main advantages including convenience and accessibility. Hbey is an application easily used by different parties used to use android based smartphone with camera feature

- Researcher :  
**Dr. Memoria Rosi, S.Si, M.Si.**
- Scheme :  
**Post-Doctoral Research (New Proposal)**
- Fund :  
**IDR139,075,000**

---

- Major :  
**Bachelor of Physics Engineering**
- Title :  
**Bandwidth Allocation for Different Traffic Services in Software Defined Networking**
- Researcher :  
**Rahmat Awaludin Salam, S.Si., M.Si.**
- Scheme :  
**Doctoral Dissertation Research (New Proposal)**
- Fund :  
**IDR 59,500,000**

---

- Major :  
**Bachelor of telecommunication Engineering**
- Title :  
**Modelling of Shape Representation on Object Introduction to a Structural Approach**
- Researcher :  
**Istikmal, S.T., M.T.**
- Scheme :  
**Doctoral Dissertation Research (New Proposal)**
- Fund :  
**IDR 60,000,000**

---

- Major :  
**Bachelor of telecommunication Engineering**



Checking simulation for anemia using Hbey application.

inside. Besides, Hbey is easily operated since the features are designed to be user friendly and it can be used whenever wherever. It is not only the accessibility offered by Hbey, but also the convenience in using it. It is convenient since it does not cause any injury in any parts of body.

However, the researchers also admitted that though it offers some advantages, Hbey will likely not be able to replace the Hb test result obtained from the blood test yet, particularly in terms of accuracy. Hbey has the accuracy tolerance of 2% compared

to that of image scanning via smartphone under a certain conditions. Hbey can be used as an early warning towards one's health condition, i.e. from the level of haemoglobin.

### Dreaming of Having a Healthier Indonesia

Research development towards Hbey continues to run and it is hoped that the development can give some contribution towards a healthier Indonesia. The socialization on the application of Hbey has been conducted by the research team, as joining different research product exhibitions, cooperating with a number of mass media as well as holding a direct socialization to the public and to different institutions. Hbey has been listed in copy right owners at the Ministry of Law and Human Rights (Kementerian Hukum dan HAM, Kemenkumham) on October 12, 2016

Foto. Doc. Hilman



by the record number of 084476.

Hbey is a part of a big research roadmap of the Group of Expertise (Kelompok Keahlian, KK) of the Information Signal Processing (Pengolahan Sinyal Informasi, PSI) in biomedical engineering. Other research pertaining to it which includes BMI cam, Glucoby, ivanet, etc is recently in the development phase that it will later be integrated into a big benefit to the Indonesian nation. A simple dream of these researchers is "to create a simple device/system that can be used to check one's initial health from each house." ❖

*Abstracted from an interview and a study entitled "Hbey: Non - Invasive Haemoglobin Meter Application" by Hilman Fauzi TSP, ST., MT., and team.*



## Profile of the Head of Research Team

**HILMAN FAUZI, ST., MT** is a fulltime lecturer at the School of Electrical Engineering (Fakultas Teknik Elektro, FTE) of Telkom University (Tel-U). He completed

his bachelor degree at Telkom Institute of Technology (Institut Teknologi Telkom, IT Telkom) by 2009 in Telecommunication Engineering while his master degree was completed by 2013 at STEI ITB focused on biomedical engineering. Born on June 25, 1986, he has some research competencies in Biomedical Engineering, Image Processing, Biosignal Processing and Artificial Intelligent.

He is recently involved in a number of studies. One of them is mobile imagination research in human brain wave.

Besides teaching and doing some research, Hilman has ever been a Manager Assistant for the Unit of Basic and General Education Course (Perkuliahan Pendidikan Dasar dan Umum, PPDU) in 2015. Several courses he has ever taught are Algorithm and Programming, Discrete Mathematics, Biomedical Instrumentation, as well as Signal and Linear System. ❖

- Title :  
**Increased Power Efficiency and  
Papr Reduction in the OFDMA  
Radio Resource Allocation Using a  
Genetic Algorithm**
- Researcher :  
**Sofia Naning Hertiana, S.T., M.T.**
- Scheme :  
**Doctoral Dissertation Research  
(New Proposal)**
- Fund :  
**IDR 60,000,000**

---

- Major :  
**Bachelor of telecommunication  
Engineering**
- Title :  
**Improved Routing Performance and  
Congestion Control with Cross-  
layer Schemes Using Signature to  
Noise Ratios on Ad hoc Wireless  
Networks**
- Researcher :  
**Budi Prasetya, S.T., M.T.**
- Scheme :  
**Doctoral Dissertation Research  
(New Proposal)**
- Fund :  
**IDR 60,000,000**

---

- Major :  
**Bachelor of telecommunication  
Engineering**
- Title :  
**Design of Microwave Absorber  
that can be Used for Health  
Applications**
- Researcher :  
**Bambang Setia Nugroho, S.T., M.T.  
Dr. Achmad Munir, S.T. (Institut  
Teknologi Bandung)  
Dr. Levy Olivia Nur, S.T., M.T.**

# *EggQ* *Checking the Quality of Eggs Objectively*

Chicken eggs belong to the animal protein sources mostly found in any society since it is affordable. However, uncooked eggs sold in the market have different qualities depending on the time, temperature and storage, as well as the shell condition whether they are clean or contaminated by some dirt.

Besides, eggs are fragile food of which the condition cannot be seen from their outer shell. Consumers sometimes dissatisfied finding that the eggs she bought has a bad quality when it is cracked. Then, what should the sellers do so that they can sell a qualified fresh egg?

In wholesalers and supermarkets, it is certainly difficult to check the fresh quality of eggs one by one. They usually take an egg as a sample to be cracked and to observe the inside condition of the egg directly. If the egg is apparently good, the egg is considered to remain has a good quality and fresh, and vice versa. However, the observation is still subjective because it will depend on the light and the observer's eye sight.

There are, however, four categories of eggs including AA (very good quality), A (good quality), B (quite good quality), and C (bad quality). This category is to determine the nutrition the egg has depicted by the color and the shape of the white and egg yolk. Therefore, this study is aimed at trying to create a device to measure the quality of an egg, objectively and scientifically, since it is an android technology based device.

Through the Prospective Technology Based Start-Up (Calon Perusahaan Pemula Berbasis Teknologi, CPPBT) research scheme 2017 from the Ministry of Research, Technology and Higher Education (Kementerian Riset Teknologi dan Pendidikan Tinggi, Kemenristekdikti), EggQ has turned to a product prototype of which the Technology Readiness Level (TRL) is 7. It is, however, aimed for the egg distributors/sellers, wholesalers, markets, supermarkets and food industry using eggs as the main ingredient. The system processed is by taking some eggs as the samples and are then cracked in the way the EggQ has. The white and egg yolk image is then taken.

After that, by using a digital image processing technology, an algorithm and android based software is then made and installed to EggQ to process and read the egg image. The final image depicted in EggQ may determine the grades of eggs (AA, A, B, C) resulted from the reading process towards the algorithm within the device. The quality and the fresh level of the egg can be detected through the android based application installed in the smartphone.

There are some benefits using EggQ that make this device ready to enter the market. First, the assessment made by EggQ can be more objective than that of human (Yolk Color Fan). Second, the shape and product dimension are compact so that it is handy. The last, this device uses an android based application, a simple interface, equipped

■ Scheme :  
**Applied Product Research (Last Year Proposal)**

■ Fund :  
**IDR 55,000,000**

■ Major :  
**Bachelor of Physics Engineering**

■ Title :  
**Design of Vocal-based Image Identification Systems as an Auxiliary Vocabulary Detection Tool**

■ Researcher :  
**Drs. Suwandi, M.Si.  
Hertiana Bethaningtyas Dyah K., S.T., M.T.  
Dudi Darmawan, S.Si., M.T.**

■ Scheme :  
**Applied Product Research (New Proposal)**

■ Fund :  
**IDR 60,000,000**

■ Major :  
**Bachelor of Physics Engineering**

■ Title :  
**Exploring the MoS2 based photodetector**

■ Researcher :  
**Dr. Ismudiati Puri Handayani  
Dr. Arramel (National University of Singapore)  
Dr. Memoria Rosi**

■ Scheme :  
**Science & Technology Research Grant (Indonesia Toray Science Foundation - ITSF)**

■ Fund :  
**IDR 38,000,000**



with a manual book so that it is easy to use.

The development of EggQ is conducted gradually through a number of research processes along with some consultation with experts from the Faculty of Husbandry of Padjadjaran University (Universitas Padjadjaran, Unpad) and Product Design Study Program of Telkom University. Though it is simple, EggQ has reached some positive responds from a number of MD Fresh Dairy & Eggs in charge of checking the quality of eggs and of the negotiation towards the price of eggswith suppliers at supermarket warehouses.

It is because that this device will ease the checking process and has a high level of accuracy. To the present time, a number of egg sellers cannot yet determine the quality of eggs within the categories of AA, A, B, and C. As long as the eggs are not watery and rotten, the sellers will sell all their eggs by the same price. However, after using EggQ, eggs can be categorized into different qualitieswhere the information can be provided for the consumers so that it will determine the price of each egg.

Based on the research in farming, the eggs obtained from the chicken farm, in general, tend to be fresher since they are hatched recently. However, the quality of eggs at distributors tend to be lower than that since it takes time to either distribute the eggs from the farmer or store them, before they are finally handed to the sellers. By using EggQ, after the checking process, the eggs will be packaged differently according to their quality. Outside the packaging, there will be a label

stating the quality and the expired date. Therefore, sellers can be more selective and increase their product quality. Consumers will also have some benefits since the eggs they buy are qualified.

### Checking Eggs without Cracking Them

Though the research on EggQ within the CPPBT scheme has been finished, the development is not stopped there. EggQ has recently been proposed to have the Intellectual Property (Kekayaan Intelektual, KI) in terms of the Copy Right for the Appliction, Industry Design and Brand, i.e. to the Directorate General of Intellectual Property through Intellectual Property Right Clinic (KlinikHKI) of Telkom University (Tel-U). This innovation has also receiveddevice certification/ calibration from the Directorate General of Consumer Protection and Trade Regulation of the Ministry of Trade of the Republic of Indonesia (Direktorat Jenderal Perlindungan Konsumen dan Tata Tertib Niaga Kementerian Perdagangan Republik Indonesia). One of the requirements for a product to be ready to be marketed is that its technological readiness level should be in the level of 9. However, this



Hardwarefordetectingeggsquality(EggQ).

product, resulted from the CPPBT research, has just in the level of 7, which means that it has passed a test in a relevant environment. It is because that to be marketed, a product resulted from some research should have either certification test (clinical test for health device) andcirculation permit test, or the product and market validity.

Recently, there are only three units of the prototype of EggQ made as the requirement for the presentation in Monitoring and Evaluation (Monev) of CPPBT, i.e. as the display, before the Kemenristekdikti team. Besides, this product has been revealed in several exhibitions including Innovator & Innovation Indonesian Expo (Inovator & Inovasi Indonesia Expo, i3E) at Grand City Mall





## Profile of the Head of Research Team

### **LEDYA NOVAMIZANTI, S.Si., MT,**

born in Padang, 6 November 1983 is a fulltime lecturer at the School of Electrical Engineering (Fakultas Teknik Elektro, FTE) of Telkom University (Tel-U). This mother with three children accomplished her bachelor degree at Andalas University (Universitas Andalas), West Sumatera, in Mathematics in 2005. However, her master degree was accomplished by her in 2008 at Telkom Institute of Technology (Institut Teknologi Telkom, IT Telkom) in Telecommunication Engineering.

Besides carrying out the Three Pillars Ledya has ever been involved at Bandung Techno Park (BTP) in 2010-2011 ; the Secretary of the Group of Expertise (Kelompok Keahlian, KK) of Information Signal Processing (Pengolahan Sinyal Informasi, PSI) ; Internal Audit Unit (Satuan Audit Internal, SAI); and Analyst at the Directorate of Higher Education at Telkom Education Foundation (Yayasan Pendidikan Telkom, YPT).

Some courses she has ever taught are Calculus, Discrete Mathematics, Algorithm and Programming, Signal and System, Discrete Time Signal Processing, as well as Coding and Compression. ❖

Surabaya, BUMN based Higher Education Alliance (Aliansi Perguruan Tinggi, APERTI) Expo at PT POS Indonesia-Jakarta, and Industrial Gathering & Best Employer Award 2017 at Mulia Hotel Senayan – Jakarta.

In the future time, EggQ will be developed so that the egg checking can be carried out without cracking the egg. Equipped with image processing technology, that idea is not impossible to reach. On EggQ, the checking process towards egg quality can be conducted anytime anywhere. It is because the device has been equipped with LED lamp that enables the checking process to be conducted at night. After the CPPBT research scheme, the research team should only refine the business concept management for this device so that on the next scheme, EggQ may be ready to be marketed. ❖

*Abstracted from the research entitled "EggQ: An Android Based Detector for the Quality and Freshness of Eggs" by Ledya Novamizanti, S.Si., MT and team.*

- Major :  
**Bachelor of Industrial Engineering**
- Title :  
**Development of Design and Development A Bayu-Surya Automatic And Independent Hybrid Power Generation Prototype**
- Researcher :  
**Drs. Tatang Mulyana, M.T., Ph.D.**
- Scheme :  
**Post Doctoral Research (New Proposal)**
- Fund :  
**IDR 191,425,000**

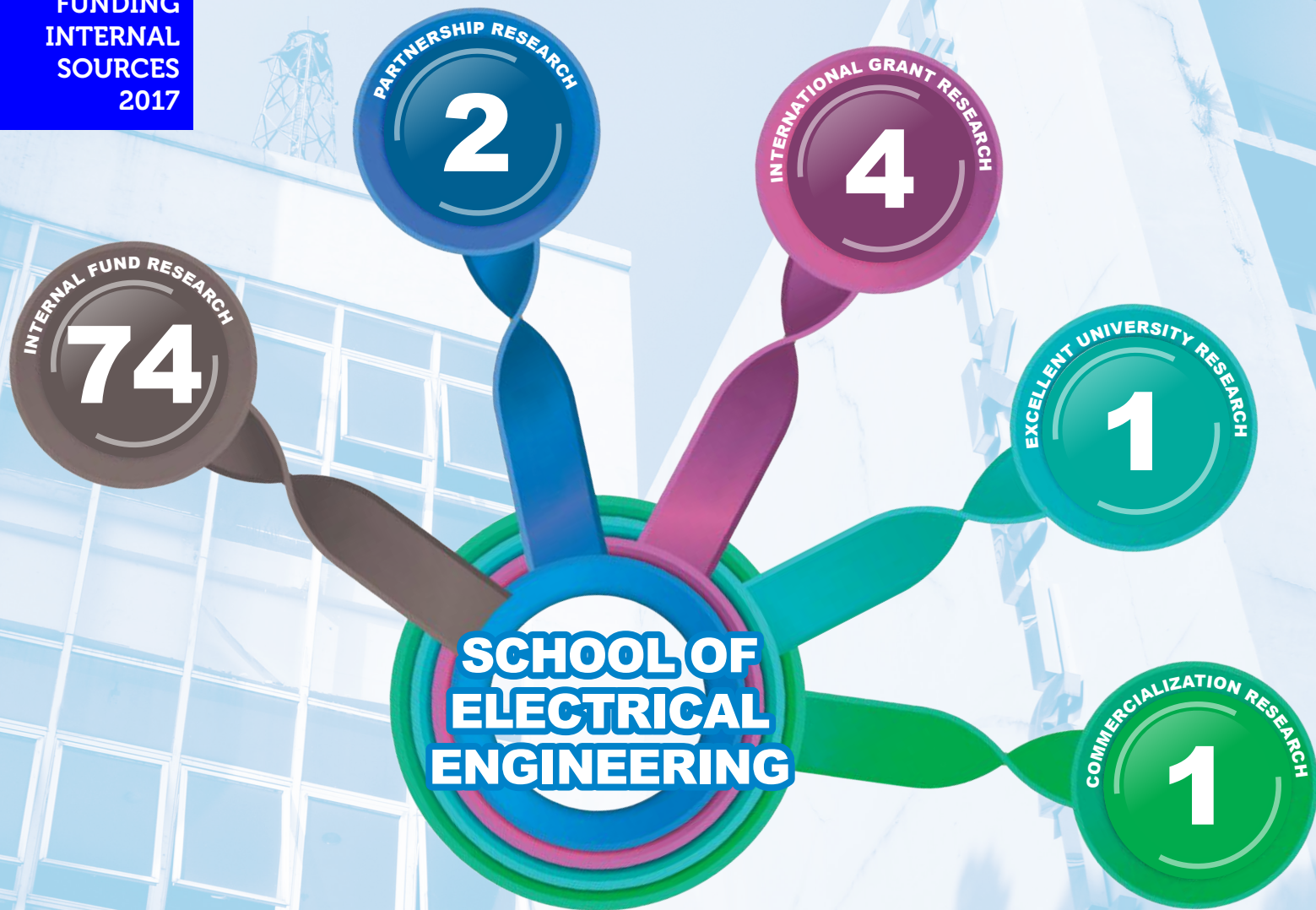
---

- Major :  
**Bachelor of Industrial Engineering**
- Title :  
**Qualitative Study of Culture-Building Strategies Post-Structuring of Higher Education in Indonesia**
- Researcher :  
**Rosad Ma'ali El Hadi, Ir., M.Pd., M.T.**
- Scheme :  
**Doctoral Dissertation Research (New Proposal)**
- Fund :  
**IDR 57,000,000**

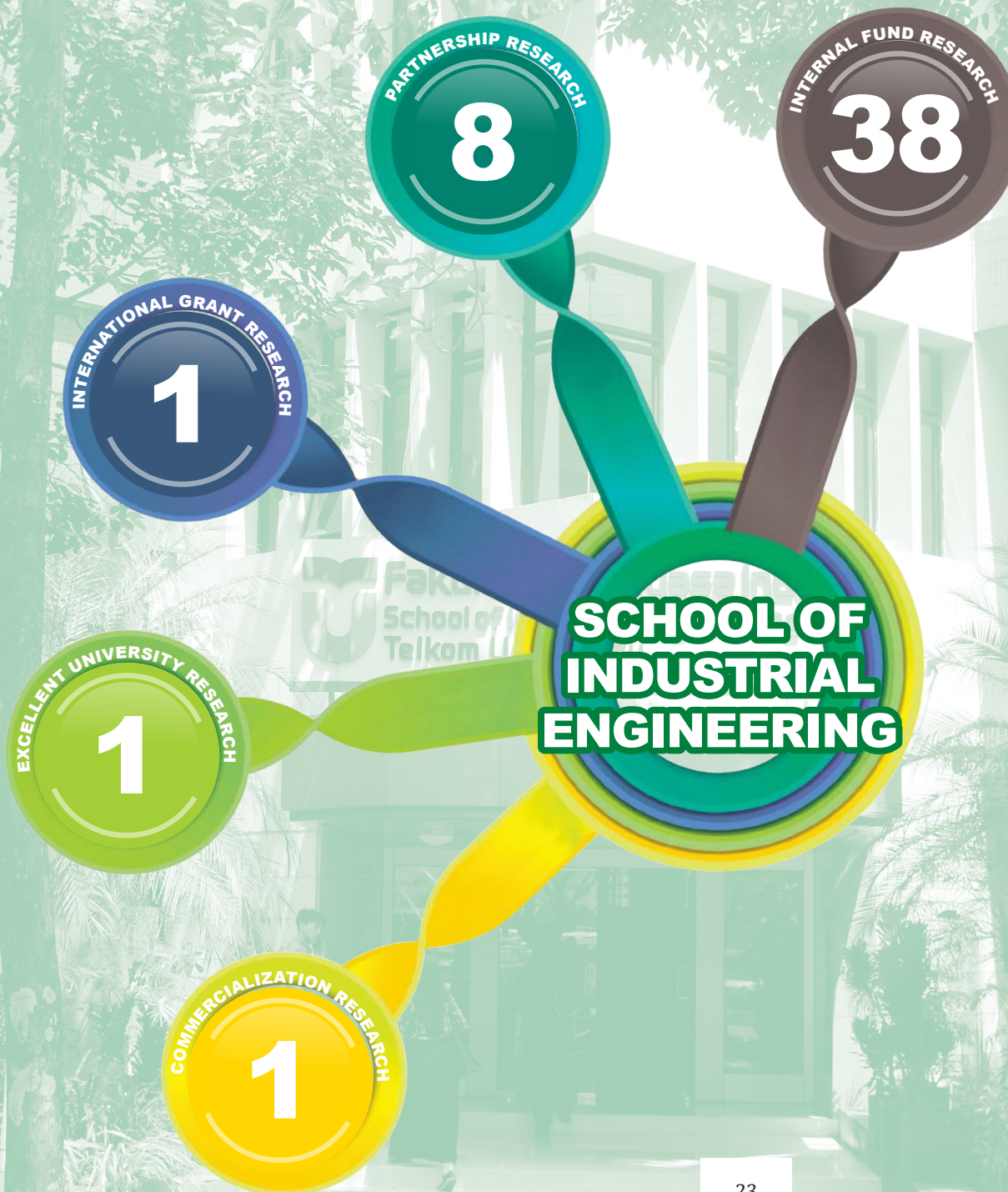
---

- Major :  
**Bachelor of Industrial Engineering**
- Title :  
**Application Development Business Intelligence Based Data Warehouse On Rice Logistics System To Support National Food Security System**
- Researcher :  
**Ari Yanuar Ridwan, S.T., M.T.**
- Anggota :  
**Teddy Syafrizal, B.Eng., M.Sc.**

THE AMOUNT  
OF RESEARCH  
FUNDING  
INTERNAL  
SOURCES  
2017







## EXTERNAL FUND RESEARCH 2017

### SCHOOL OF INDUSTRIAL ENGINEERING

- Scheme :  
**Applied Product Research (Last Year Proposal)**
- Fund :  
**IDR 65,000,000**

---

- Major :  
**Master of Industrial Engineering**
- Title :  
**Study of Business Development of Rajut Binongjati Industrial Center Based on Cluster Analysis**
- Researcher :  
**Dr. Ir. Endang Chumaidiyah, M.T.**
- Anggota :  
**Rio Aurachman, S.T., M.T.**
- Scheme :  
**Applied Product Research (Last Year Proposal)**
- Fund :  
**IDR 60,000,000**

---

- Major :  
**Bachelor of Industrial Engineering**
- Title :  
**Spatial Maintenance and Planning Policies For Data-Based Printing Machines Reliability**
- Researcher :  
**Drs. Judi Alhilman, MSIE.**
- Anggota :  
**Fransiskus Tatas Dwi Atmaji, S.T., M.Eng.**
- Scheme :  
**Applied Product Research (Last Year Proposal)**
- Fund :  
**IDR 70,000,000**

---



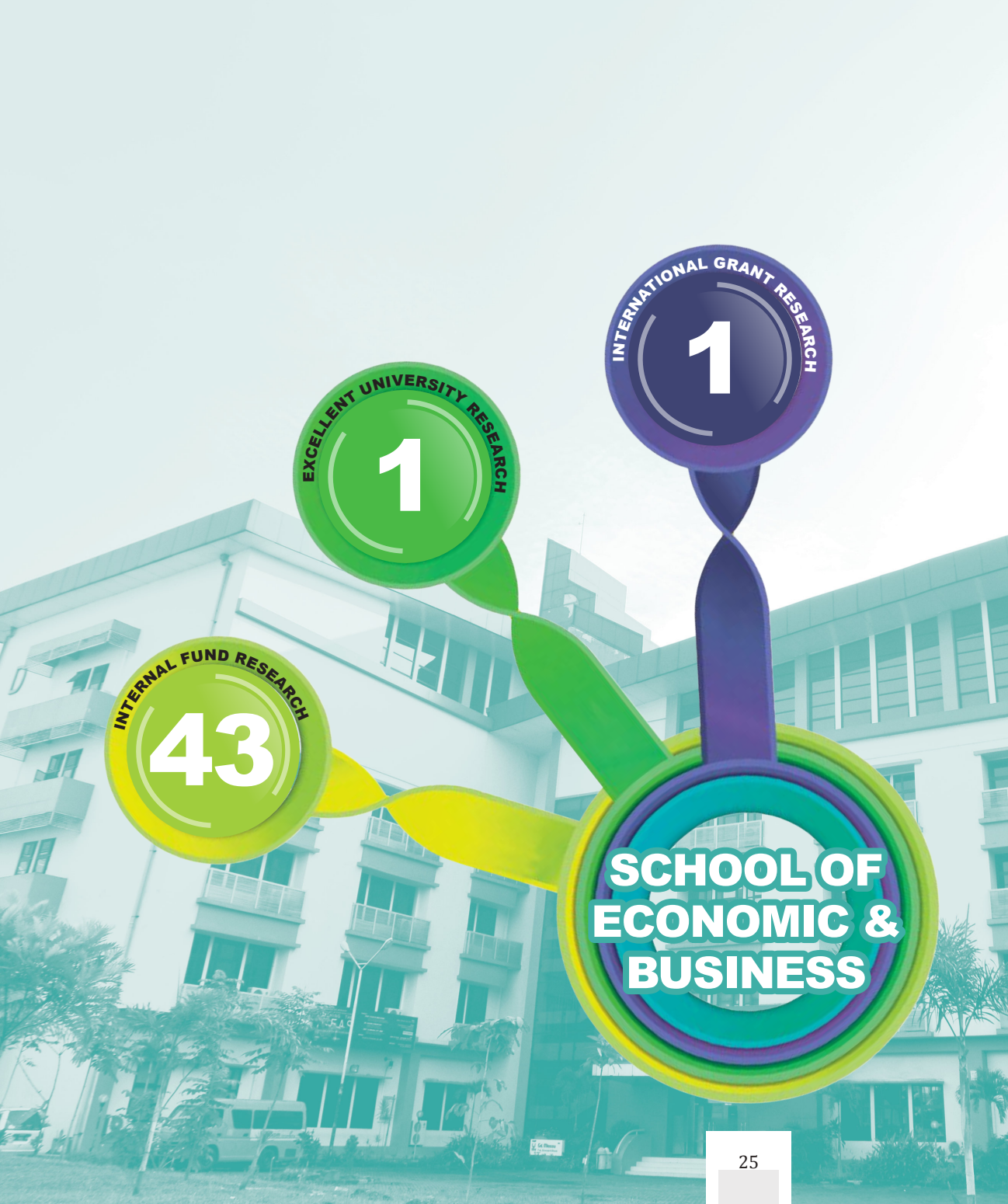
THE AMOUNT  
OF RESEARCH  
FUNDING  
INTERNAL  
SOURCES  
2017



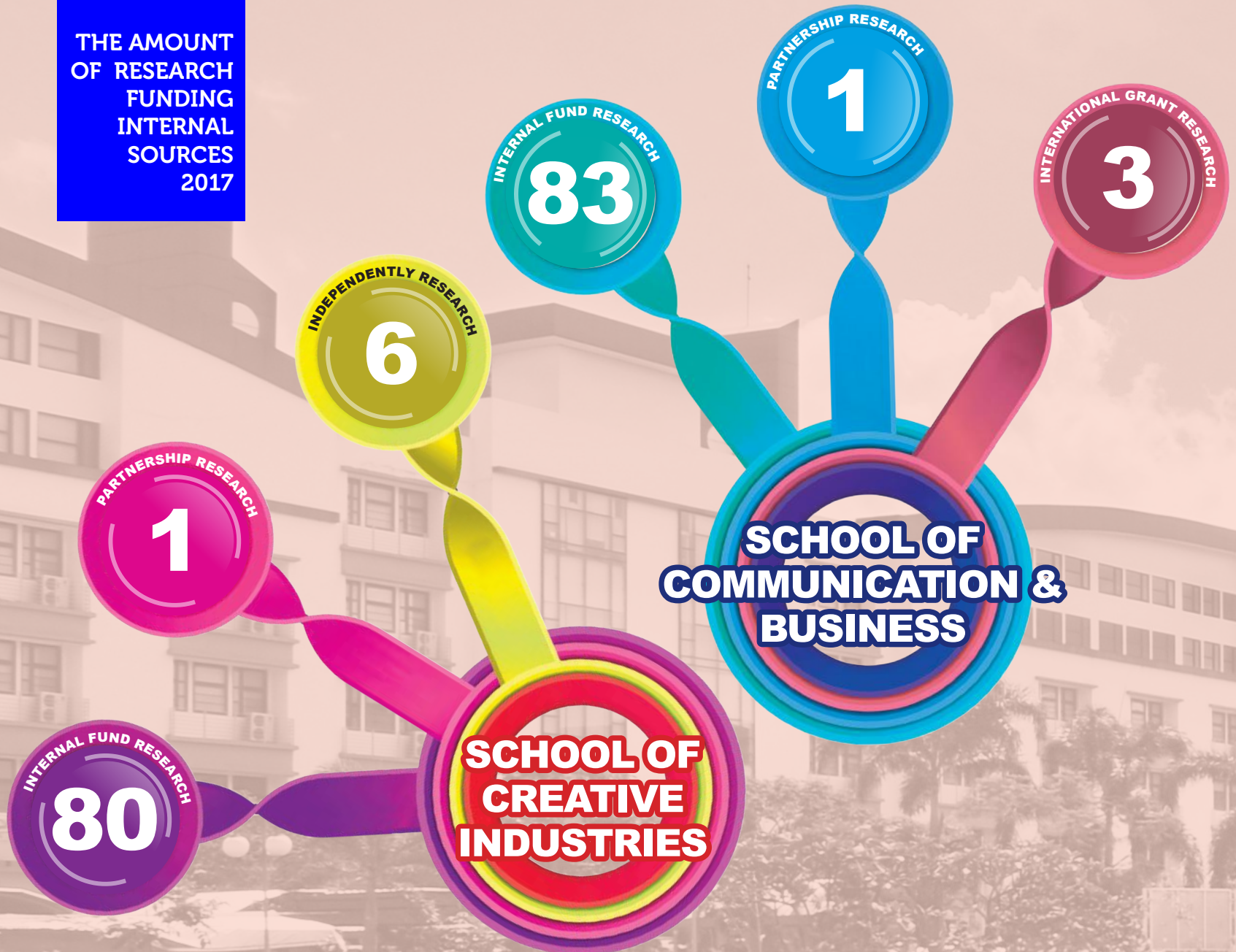


**SCHOOL OF INDUSTRIAL  
ENGINEERING**

- Major :  
**Bachelor of Information System**
  - Title :  
***Platform user/group Management  
for Community Activity Needs***
  - Researcher :  
**Yuli Adam Prasetyo, S.T., M.T.**
  - Anggota :  
**Muhammad Azani Hasibuan,  
S.Kom., M.T.I.  
M. Teguh Kurniawan, S.T., M.T.**
  - Scheme :  
**Applied Product research (New  
Proposal)**
  - Fund :  
**IDR 65,000,000**
- 



THE AMOUNT  
OF RESEARCH  
FUNDING  
INTERNAL  
SOURCES  
2017





- Major :  
**Bachelor of Informatic Engineering**
- Title :  
***Patchable Devices Early Detection of Wind Sits for The Early Handling of Deadly Heart Attacks***
- Researcher :  
**Satria Mandala, B.Eng., M.Sc., Ph.D**  
**Prof. Dr. Adiwijaya, M.Si.**  
**Dr. Eng. Asep Suhendi, S.Si., M.Si.**  
**Anditya Arifianto, S.T., M.T.**  
**Danang Triantoro Murdiansyah, S.Si., M.T.**  
**Aniq Atiqi Rohmawati, M.Si.**  
**Junartha Halomoan, S.T., M.T.**  
**Estananto**  
**dr. Sasmoyo Widito, SpJP (RSUD DR Soetomo)**  
**dr. Rizal, SpJP (RSUD DR Soetomo)**  
**Yudi Limbar, M.T.**  
**LEN**
- Scheme :  
**Industrial Technology development Program (New Proposal)**
- Fund :  
**IDR 479,686,000**

- Major :  
**Bachelor of Informatic Engineering**
- Title :  
**Smart Card reader with a Single SAM for Multiple Cards Integrated with Academic Information System**
- Researcher :  
**Dr. Maman Abdurohman, S.T., M.T.**  
**Danang Triantoro Murdiansyah, S.Si., M.T.**  
**Junartha Halomoan, S.T., M.T.**  
**DR. Helni Mutiarsih Jumhur, S.H., M.Hum.**  
**Satria Mandala, B.Eng., M.Sc., Ph.D**  
**Estananto**

## **SCHOOL OF APPLIED SCIENCES**

**COMMERCIALIZATION RESEARCH**  
**2**

**EXCELLENT UNIVERSITY RESEARCH**  
**5**

**PARTNERSHIP RESEARCH**  
**2**

**INTERNAL FUND RESEARCH**  
**123**



INSPIRATION



Satria Mandala, B.Eng., M.Sc., Ph.D

## **Focused on Working** Carrying Out the Three Pillars of Higher Education

Aji Gautama Putrada  
 Andrew Brian Osmond, S.T.,  
 M.Eng.  
 Sidik Prabowo, S.T., M.T.  
 Yanuar Firdaus Arie Wibowo, S.T.,  
 M.T.  
 Dr. I Gusti Bagus Baskara  
 Nugraha, S.T., M.T. (ITB)  
 Dr. Ir. Wahyu Catur Wibowo, M.Sc.,  
 Ph.D. (UI)  
 Zendy Agung Permana, S.T.  
 (Lembaga Sandi Negara Indonesia)  
 Elyas Palantei, S.T., M.Eng., Ph.D.  
 (Unhas)

- Scheme :  
**Industrial Technology  
 development Program (Advanced  
 proposal)**
- Fund :  
**IDR 412,000,000**

- 
- Major :  
**Bachelor of Computational  
 Engineering**
  - Title :  
**Optimized Algorithm Based  
 on f-staining to Complete  
 Scheduling Problem on Any Graph  
 Structure**
  - Researcher :  
**Prof. Dr. Adiwijaya, S.Si.,  
 M.Si.  
 Dr. Maman Abdurrohman, S.T., M.T.  
 Said Al Faraby, S.T., M.Sc.**
  - Scheme :  
**Fundamental Research (Last year  
 Proposal)**
  - Fund :  
**IDR 85,000,000**
- 

In order to improve the quality of education, Telkom University (Tel-U) is serious in managing the teaching process to its students. One of the aspects to focus is the quality of the lecturers.

The recruitment process of the lecturers is conducted selectively and prioritizes the competence. It is because lecturers are required not only to teach but also to do the other elements of the Three Pillars of Higher Education, i.e. to conduct some research and community service. One of the lecturers having some achievement in the three points is Satria Mandala, B.Eng., M.Sc., Ph.D.

Having been officially joined Tel-U in 2016, Satria who was born in Tulungagung September 2, 1973 belongs to the diaspora having lived for years in Malaysia. However, after 9 years working at Malaysia University of Technology (Universiti Teknologi Malaysia, UTM) he decided to return to Indonesia and become the family of the School of Informatics (Fakultas Informatika, FIF) of Tel-U.

He has some interest in network which involves wire and wireless network like MANET, MANET Censor, VANET and Network Security. He also does some research in the technology booming recently, i.e. Internet of Things (IoT) for Biomedical Engineering (Image Retrieval and Medical Informatics). For this field, Satria focuses on the research in health. One of his studies is the way to monitor cardio. He manages some cooperation with Brawijaya University (Universitas Brawijaya) and Dr. Saiful Anwar Hospital, Malang.

"Therefore, my research on Biomedical Engineering still relates to networking yet it is applied on biomedics. Besides, I still have other applications aimed at monitoring senior citizen's health condition. It is not only used to monitor the heart condition but also combined with some tests aimed for the senior citizen's health, including blood sugar test, body temperature test, cholesterol test, etc.," he said.

His study in developing an application for biomedics has been quite specific. Even, he has recently conducted some collaboration with researchers from Swiss – Germany University (SGU) on the muscle force or Mechanomyography. This study

## INSPIRATION

is focused on an application used to monitor the rehabilitation of stroke patients. The monitoring process in this application, he said, is determined by the level of the muscle fatigue of the stroke patients who are in rehabilitation process. It is aimed at controlling the exercise set and physical therapy for the stroke patients. It is because one's fatigue level is different one to the other. It depends on one's physical condition which relates to the muscle inside his body. To the present time, there has not been any measurement towards the fatigue level that can be seen from the muscle condition. It is often that people subjectively felt tired. In fact, one's fatigue level can be quantified and measured.



*It is never too late to make any attempt as long as we are willing to trigger ourselves and give some contribution to the research and publication in our expertise. I expect that we can always trigger ourselves and give some contribution in the future.*

He has already had a long experience in the research and publication in computing. He has finished his bachelor degree in Electrical Engineering (Control System) from Brawijaya University (Universitas Brawijaya), Malang in 1997. However, his further education (master and doctoral

degree) was completed at Malaysia University of Technology (Universiti Teknologi Malaysia, UTM) in the period of 2004 - 2011 in Communication & Networking. Beforehand, he had ever taught at Muhammadiyah University of Malang (Universitas Muhammadiyah Malang,



Satria Mandala, B.Eng., M.Sc., Ph.D., achievement in SINTA Website.





Foto. Internet

UMM), State Islam University of Malang (Universitas Islam Negeri (UIN) of Malang), and UTM from 2006 until 2016.

Joining Tel-U, Satria did not take the chance given to him for granted. He had been used to the tight research atmosphere in Malaysia. No wonder, two years after joining Tel-U, he earned several research fellowships. In 2016, he received the international grant of Industrial Technology Development Program (Program Pengembangan Teknologi Industri, PPTI) in 2017; he regained the grant for research in Healthcare. This international grant is in the form of research collaboration between Tel-U and UTM. Besides, he also received a Downstream Research Grant from Bandung Techno Park (BTP) in 2017.

However, he did not see any difference between Indonesia and Malaysia. He said that Indonesia can compete with Malaysia in the quality of teaching learning if its people are willing to work harder and leave their comfortable zone. His determination should indeed be appreciated. He not only improves his competence in his research field but also encourages his students to have some achievement.

It has been proven that in August 2016, he was able to take his students he taught to win Telemedicine Innovation Challenge at Monash University Malaysia. That time, Pulse Team of FIF Tel-U won the second place. Besides, he had also been successful in taking his students to win Merit Award Asian Pacific Information and Communication Alliances Award (APICTA) 2016 in Taiwan. In 2017, his students regained the Gold Medal from Telemedicine Innovation Challenge at Monash University. The latest one is that his students, the Rhythm Team won the Merit Award at APICTA 2017 held in Dhaka, Bangladesh, 7 – 10 December 2017.

"It is never too late to make any attempt as long as we are willing to trigger ourselves and give some contribution to the research and publication in our expertise. I expect that we can always trigger ourselves and give some contribution in the future," he said. ❖

- Major :  
**Master of Informatic Engineering**
- Title :  
**Overcome The Weakness of The ID Based Authentification Scheme on Smart Card**
- Researcher :  
**Ir. Ari Moesriami Barmawi, M.Sc., Ph.D.**  
**Dr. -Ing. Fiky Yosef Suratman**  
**Fazmah Arif Yulianto, S.T., M.T.**
- Scheme :  
**Competence Based Research (last Year Proposal)**
- Fund :  
**IDR 124,800,000**

- 
- Major :  
**Bachelor of Computational Engineering**
  - Title :  
**Development of Automated Follicle Detection Applications t Support PCOS Detection Based on ultrasound Image**
  - Researcher :  
**Jondri, M.Si.**  
**Prof. Dr. Adiwijaya, S.Si., M.Si.**  
**Untari Novia Wisesty, S.T., M.T.**
  - Scheme :  
**Applied Product Research (New Proposal)**
  - Fund :  
**IDR 80,000,000**

- 
- Major :  
**Bachelor of Computational Engineering**
  - Title :  
**Travel-CRS: A Travel Planning Based Applications Conversational Recommendar System on Mobile Devices**

# Taking Traditional Artefacts to the Global Market

In the past time, batik is identic to jarit fabric commonly used by women when they wear kebaya. Recently, however, it can be seen in different occasions. It is similar to other traditional fabrics from other areas in Indonesia. Even, it is not only the fabric which has now recently been developed, some Indonesian traditional artifact has also been started to be developed to be a prestigious art work. It has also been a focus of Expert Group (Kelompok Keahlian, KK) at the School of Creative Industry (Fakultas Industri Kreatif, FIK) of Telkom University, Art, Aesthetics & Practices (AAP).



Sample of product from the experiment of weaving development in lungsi and pakan. Foto. Doc. KK AAP



The expertise group also known as Art, Aesthetics & Practices is comprised by two Study Programs (Program Studi, Prodi) of Intermedia and Textile Craft & Mode. Besides making some development towards traditional artifacts, i.e. to be an art work accepted by the market segment with recent lifestyle, KK AAP has also made some attempts in cultural study. The object of the study, particularly pertaining to traditional artefacts, is not limited to the development of fabric but also concerns on the ornamental art and traditional motif developed to adapt to the trend recently popular.

It is delivered by the Head of KK AAP, Fajar Ciptandi, S.Ds., M.Ds. "Well, this traditional artifact does not mean doing some research on things in the past time, but

it means that it is the way to make the fabrics accepted by the market segment with recent trend and life style. It is, for example, processing woven fabric by developing some techniques, ornamentation, and some ways to apply it on different popular products. Therefore, we will still be able to create global (global-local) products. And so is for the art aspect, we do not talk about arts in conventional context anymore, i.e. in terms of painting and sculpture, it also involves intermedia arts which combine different materials and media in order to create a new art identity," he said.

Having had 114 members, KK AAP has already had a research roadmap to the year of 2020. The roadmap is certainly in line with the visions and missions of Tel-U that concern on the Information and Communication

- Researcher :  
**Z K Abdurahman Baizal, S.Si., M.Kom.**  
**Kemas Muslim Lhaksana, S.T., M.ISD.**  
**Aniq Atiqi Rohmawati, S.Si., M.Si.**
- Scheme :  
**Applied Product Research (New Proposal)**
- Fund :  
**IDR 65,000,000**

---

- Major :  
**Bachelor of Computational Engineering**
- Title :  
**Implementation of Soft Computing Algorithm on Mobile Device for Planting Calender Prediction (Case Study : Bandung District)**
- Researcher :  
**Dr. Deni Saepudin, S.Si., M.Si.**  
**Fhira Nhita, S.T., M.T.**  
**Danang Triantoro Murdiansyah, S.Si., M.T.**
- Scheme :  
**Applied Product Research (New Proposal)**
- Fund :  
**IDR 80,000,000**

---

- Major :  
**Bachelor of Computational Engineering**
- Title :  
**Public Transportation Route System**
- Researcher :  
**Sri Suryani Prasetyowati, S.Si., M.Si.**  
**Yuliant Sibaroni, S.Si., M.T.**  
**Drs. Mahmud Imrona, M.T.**



"SOMNIUM : HARMONI DAN NARASI KOSMOS"  
Foto. Doc. KK AAP



## RESEARCH GROUP

Technology (ICT).

In the year of 2017, the research field is focused on lifestyle; cultural traditional content; art product/artifact/work. In the year of 2018, the research is still aimed at developing the three elements previously studied. However, the art product/artifact/work should at the present time be able to be realized into a prototype, a material trend invention, involve some technology as well as skill mastery leaving the basic skills to the more advanced ones.

In the year of 2019, the research area is more to lifestyle and product/artifact/work adapting traditional contents yet it should also be able to synergize directly with technology; and for start-up, the creativepreneur concept is aimed at collaborating business and the creation of artwork and craft. This year, the technological aspect is being taken to the KK AAP research area, in line with the visions and missions of Tel-U as an ICT based university. In the year of 2020, Tel-U will be welcoming its visions and missions as an Entrepreneurial University so that the research area of KK AAP would also in line with it to consistently broaden the business scope to the art work and craft.

Through the research roadmap composed to the year of 2020, KK AAP has different target focuses. First, it is planned to be the center of ideal concepts in fine arts and textile craft. Second, it is planned

to be good at craftsmanship, in line with the requirements in textile art and craft. Third, it is planned to have some focus on the indigenous traditional values through its consistency that takes the traditional atmosphere as the inspiration in the creative work. It is also planned to have a synergy and an intense collaboration in the implementation of technology towards the study in fine arts and textile craft. The last is that it is planned to be the center for the development of future entrepreneurs in creative industry, in textile art and craft.

Research in KK AAP is more focused on the craft and art works like a research by the study program of Textile Craft & Mode

entitled "GETTING OLD AND SHABBY" by Fajar Ciptandi, S.Ds., M.Ds. This study involves some creation of fashion products, i.e. by applying weaving fabrics as an experiment product resulted from some development on lungsi and pakan which belong to the traditional weaving techniques. This weaving technique development which is not in accordance with the indigenous traditional weaving practices produces varied fabric patterns.

The other works in this field is a research entitled "SOMNIUM: HARMONY AND COSMOS NARRATION" by Iqbal Prabawa Wiguna, S.Ds., M.Sn., from the Intermedia Arts Study Program. This work



Development weaving process in lungsi and pakan. Foto. Doc. KK AAP

was inspired by a science fiction article on nature described and presented in fine art collaborated with technology.

Besides research, KK AAP also makes some cooperation with other parties outside Tel-U. It is for instance the one with Indonesia Weaving Visions (Cita Tenun Indonesia, CTI) in the research pertaining to the development of traditional fabrics in Indonesia since 2016. KK also cooperates with the Ministry of Trade of the Republic of Indonesia under Designer Dispatch Services (DDS) Program. This program develops products of Small and Medium Enterprises (Usaha Kecil Menengah, UKM) under the targeted development program of the Ministry of Trade of the Republic of Indonesia, since 2015.

To find different things related to KK AAP, FIK is developing a specially designated site for KK AAP at <http://aap. rg.telkomuniversity.ac.id>. ❖



**Fajar Ciptandi, S.Ds., M.Ds**

## KK AAP Featured Studies

1. "The Relevance of Ethical Design Concept on the Indonesian Traditional Culture Based Eco Friendly Fashion Concept" by Arini Arumsari, S.Ds., M.Ds. (Textile Craft & Mode Study Program, 2017)
2. "Exploration on the Tarum Pigment as the Indicator for Chemical Intensity in Citarum River" by Aulia Ibrahim Yeru, S.Ds., M.Sn. (Intermedia Arts Study Program, 2017)
3. "Optimization on Gedhongan Weaving Skill through Some Experiments on Lungsi and Pakan as an Attempt to Revitalize Local Tradition" by Fajar Ciptandi, S.Ds., M.Ds. (Textile Craft & Mode Study Program, 2017). ❖

■ Scheme :  
**Applied Product Research (New Proposal)**

■ Fund :  
**IDR 79,000,000**

■ Major :  
**Bachelor of Informatic Engineering**

■ Title :  
**Solution Problem Upwelling  
Freshwater Fishery Based Wireless  
Sensor Network**

■ Researcher :  
**Bayu Erfianto, S.Si., M.Sc.  
Novian Anggis Suwastika, S.T., M.T.  
Sidik Prabowo, S.T., M.T.**

■ Scheme :  
**Applied Product Research (New Proposal)**

■ Fund :  
**IDR 79,000,000**

■ Major :  
**Bachelor of Informatic Engineering**

■ Title :  
**Vehicle Data recorder Based on  
OBD-II for Accidental Forensic**

■ Researcher :  
**Bayu Erfianto, S.Si., M.Sc.  
Andrian Rakhmatsyah, S.T., M.T.  
Catur Wirawan Wijiutomo, S.T., M.T.**

■ Scheme :  
**Applied Product Research (New Proposal)**

■ Fund :  
**IDR 64,000,000**



## Diploma Hotel Management Laboratory Preparing Human Resources for Tourism Sector

Being a large private university, Telkom University (Tel-U) keeps watching the human resource needs development in various fields. One of them is the tourism sector that is rising and very prospective as a producer of foreign exchange. Through the D3/ Diploma Hotel Management Study Program (Prodi), Tel-U prepares graduates who are ready to have roles in the tourism industry.

Foto. Doc. Ersy



To prepare graduates who are ready to have roles in this industry, the need of sufficient laboratory for student practicum becomes the main issue. Especially for vocational education that prioritizes applied skills/practices. This was disclosed by the Chairman of Prodi D3/Diploma Hotel Management, Ersy Ervina, S. Sos., M.Par.

"Currently, we are supported by five main laboratories: Kitchen, Pastry, Restaurant, Housekeeping, and Front Office. Front Office Laboratory is located in Selaru Building, which is in the Gallery Room, on the ground floor of the School of Applied Sciences. Kitchen, Pastry, and Restaurant are on the same floor. As for Housekeeping Laboratory, the model room, located in Building L," she stated.

The teaching pattern in D3/Diploma Hotel Management is divided into theoretical and practical classes. D3/Diploma Hotel Management student practicum activities takes place for a month. According to Ersy, the each class of the D3/Diploma Hotel Management students are divided into 4 practice groups or Unit Practice Area (UPA), where one group consists of about 15 people per class. Each group, then conducts its own practicum at UPA, Kitchen & Pastry, Restaurant, Front Office and housekeeping.

"During the practicum, students' schedules are made in such a way as to be similar to work patterns in the industry. Practicum is held minimum 6 hours and students are divided into morning and afternoon shifts. Practicum activities are conducted from briefing, material briefing, sections grouping, to the things must

be done on that day. All activities have been planned and measured. We try to keep students focused on the practicum and no one is idle during the practicum hours," she continued.

At the front office practicum, students learn about hotel reservation procedures, check in and check out, up to the way to handle customers' complaints. "At the Front Office practicum, students are trained to handle hotel guests by using English. While on the housekeeping Practicum, students learn to clean the Public Area up to the guest room (Make Up Room). While Kitchen Labor practicum is more complex, because students must serve different menus according to the level of a student's competences. For example, for the first semester students, they are trained to prepare a set up menu called Table D 'hote service for morning shift. While for afternoon shift the service is done by students of the third semester. They prepared various menus called A'la Carte menu. On the A'la Carte menu practicum, each student must present several menus at once, such as appetizer, soup, main course and dessert menus. For this group, in one day, they can present more than 20 kinds of menu,"said Ersy.

To fulfill practicum activities, especially at Kitchen Lab, it is required Consumable Material (BHP), which is food materials to be processed. According to Ersy, BHP purchase is done every week and assisted by School Laboratory. BHP purchase is ordered based on the menu to be made, then lecturers make purchase order and coordinate with Laboran and Lab. Assistant to set it up. In the practicum implementation,

- Major :  
**Bachelor of Computational Engineering**
- Title :  
**Development of Cancer Detection Applications Based on DNA Microarray Data Clasification Using Evolving Neural Network**
- Researcher :  
**Dr. Adiwijaya, S.Si., M.Si.  
Untari Novia Wisesty, S.T., M.T.  
Annisa Aditsania, S.Si., M.Si.**
- Scheme :  
**Applied Product Research (Last year Proposal)**
- Fund :  
**IDR 62,500,000**

- 
- Major :  
**Bachelor of Informatic Engineering**
  - Title :  
**The Development of a Water-based Instrumentation Measurement Meter and Its Test System for a Tsunami Disaster Monitoring System**
  - Researcher :  
**Ema Rachmawati, S.T., M.T.**
  - Scheme :  
**Doctoral Dissertation Research (New Proposal)**
  - Fund :  
**IDR 59,500,000**
-

## LABORATORY

Front Office Practices by Diploma Hotel management student Tel-U.

students are guided and supervised by lecturers, Lab. Assistant and as well as Practicum Assistant who is from senior student.

Currently, D3 Hotel has a lecturer team consisting of 10 lecturers. They consist of 7 main lecturers and 3 supporting lecturers. For basic lectures, some lecturers are from PPDU Tel U.

"*Alhamdulillah*, although this is only a practicum requirement and conducted completely by the students, there were several orders to the Kitchen Lab. They were YPT CEO Meeting banquet, breakfast, lunch and dinner of International Office, as well as banquet of grand launching Garuda Sugardo Mobile (GSM) book owned by Telkomsel's former Director, Mr. Garuda Sugardo. Frankly, although it was promising, we were almost overload. But in this case, students can feel the hectic work in real industry. It's

a great experience for them" She continued.

Ersy admitted, D3 Hotel Lab. is very possible to be commercial. However, she prioritizes laboratories for student practicum activities and creates ready-to-work human resources in the tourism industry. Not surprisingly, the pattern of education is different from than other programs in terms of foreign language communicative ability, attitude, and grooming or physical neatness of students becoming part of education. This becomes a challenge because the conditions in Tel-U is very heterogeneous. For example, this study program has a specific and different uniform from other majors. Furthermore, there are formal attitudes and etiquette studies which are not studied by other programs.

## Hoping to Have a Laundry Laboratory

Although the program just graduated only one class, the D3/ Diploma Hotel Management is not inferior in terms of quality. In fact, for apprenticeship in semester 5,

this school only chooses 4 and 5 star hotel as apprentice location. The hotel which is the location of the D3 Tel-U Hotel student apprenticeship include Sheraton Hotel, Ritz Carlton, Arya Duta, Trans Luxury Hotel, Intercontinental, Hilton, Crowne Plaza, and others



Ersy Ervina, S.Sos., M.Par.

spreading in Bandung, Jakarta, Yogyakarta, Bintan, Palembang, Medan, Bali, to Malaysia. Moreover, some students of the D3 Hotel Tel-U immediately were asked to work in the hotel concerned. In fact, they still have to finish the Final Project (PA).

"Students have apprenticeship (On The Job Training) program in semester 5 and usually at the end of semester 4 they have been interviewed by the hotel manager. The interview is set up like a person applying for work, started from the communication skills, English, attitude,

neatness, and others. It is because, the hotel treats apprentices like real its employees so that, they are to be professional. The hotel does not want any difference service to the guests if they are served by the apprentices, because it can reduce the credibility of the hotel. Usually when students are in the program, we always advise them to find the title of the PA and ask them to search the data needed from the hotel they apprenticed. So, besides they have already known the condition and situation of the hotel, the hotel will not be hesitant to provide the required data. Therefore, the students can achieve their target punctually,"said Ersy.

The prospect of the D3/Diploma Hotel Management Tel-U graduates which is acknowledged by Ersy is very bright. Moreover, currently Indonesia is eagerly to improve the number of tourists coming into the country. even though this sector is sector can live from those who have a small capital until a great, but need to be strengthened with human resources professional and ready to work,

especially in the field of hospitality and culinary. For it, students d3 hospitality not enough only armed with education theory, but must be supported by the skills qualified that can be obtained through practicum. Then, completeness of the means practicum must also noted.

Now, we need a Laundry Laboratory that supports the hotel sector. During this time, we collaborate with Jayakarta Hotel for laundry practicum activities, because the campus does not have one. In fact, the hotel laundry is different from the house laundry, because the materials are different. For example linen, large machines, and dryclean. In addition, there is special training for chemical laundry and the way to handle it. The Investment of D3 Hotel is not cheap, but if the goal of the school is to create graduates who are ready in the industrial world, this investment has to be provided. The reason is, this activity is very supportive for entrepreneurship development of students in the future, it is not just preparing the prospective workers," claimed Ersy. ❖

**SCHOOL OF  
ECONOMICS & BUSINESS**

- Major :  
**Bachelor of Accounting**
- Title :  
**Financial Distress Prediction Model in Indonesia**
- Researcher :  
**Dr. Farida Titik Kristanti, S.E., M.Si.  
Deannes Isyuardhana, S.E., M.M.**
- Scheme :  
**Fundamental Research (New Proposal)**
- Fund :  
**IDR 56,000,000**

- 
- Major :  
**Bachelor of Management**
  - Title :  
**The Development of Open Source e-SCM as the Integration of Data Management for Fish Farmers SME's in Bandung Ulekan Market**
  - Researcher :  
**Yudi Priyadi, S.T., M.T.  
Adhi Prasetyo, S.T., M.M.**
  - Scheme :  
**Applied Product Research (Last Year Proposal)**
  - Fund :  
**IDR 80,000,000**

- 
- Major :  
**Master of Management**
  - Title :  
**Capacity Planning and BTS Tower Location Selection in CAPEX Efficiency by Using Optimization Method (Study on Telecommunication Operator Indonesia in West Java Region)**





# Paper and Reviewer Cooperation Exchange

Managing journal research publications in college has quite similar typical challenge. Start from the quality of published papers until the focused journal management.

This is recognized well by one of the journals managed by the school of Industrial Engineering (FRI) Telkom University (Tel-U), namely Journal of Systems Engineering and Industry (JRSI). This is the one of Tel-U's national journals which has been published since 2014. During that time, there were also many challenges faced by its management. Those statements were disclosed by JRSI Manager, Dr. Irfan Darmawan and Nurdinintya Athari, MT.

One of the difficulties in managing a journal is to find qualified papers, especially from external ones. Moreover, this journal is targeting for getting accreditation, which is one of the requirements that 60% of papers should come from external institutions. While from the internal, we are also difficult to find external reviewers,"said Irfan.

Although there are challenges in finding qualified papers nearly to the journal deadline, JRSI never lose the ways to publish its papers based on the field. According to Irfan, fellow journal managers are accustomed to do beneficial cooperation in terms of journal publishing. Namely, exchanging paper or a reviewer with a journal manager who has the same field from other universities.

"We share resources. It's meant, we offer our journal to other institutions if there is paper that wants to be published by JRSI, however after it has been reviewed. We also offer papers from Tel-U to other college journals that have the same field to be published after reviewing it. Likewise with reviewers, we help them to review other college journals and vice versa," he continued.

According to Nurdinintya, since Tel-U used the Open Journal System (OJS), JRSI had migrated to OJS directly. In fact, the papers published before 2016 had been uploaded into electronic form, so that, people can access them via the website.

Now we have OJS. The previous printed editions journal had been uploaded. The last two volumes are not printed anymore. We print it only by request from author as the evidence of Academic Functional Position (JFA) promotion. In fact, for the OJS there was already e-ISSN it, it is e-ISSN 2579-9142,"stated Nur.

JRSI has proposed accreditation and it will be announced in 2018 by the Ministry of Technology and Higher Education (Kemenristekdikti). About the periodicity of the publication, JRSI consistently publishes its journal twice a year in June and December. The number of papers are between 12-15 papers each published. The paper topics that go to JRSI include Production System, Engineering and Quality Control, Operational Research, Supply Chain Management, Ergonomics, Industrial Management, Project Management, Decision Support System, Knowledge Management, Enterprise and Architecture, Data Analytic, Enterprise Application Development, IT Governance, Risk and Compliance, Computation System, and others.

Having 12 external reviewers, JRSI requires that the reviewer must be at least S3 or doctorate degree in accordance with the rules issued by Tel-U. The reason is, the credibility of the reviewer will affect the credibility of the

- Researcher :  
**Dr. Drs. Palti MT. Sitorus, M.M.  
Anisah Firli, S.MB., M.M.  
Sri Widiyanesti, S.T., M.M.**
- Scheme :  
**Applied Product Research (Last  
Year Proposal)**
- Fund :  
**IDR 80,000,000**

---

- Major :  
**Master of Management**
- Title :  
**Index to Measure Smart City  
Preparedness : a Study in Bandung  
City**
- Researcher :  
**Dra. Indrawati, M.M., Ph.D.  
Dr. Husni Amani, Ir., MBA., M.Sc.**
- Scheme :  
**Post-graduate Team Research (New  
Proposal)**
- Fund :  
**IDR 93,000,000**

---

- Major :  
**Bachelor of Management**
- Title :  
**Knowledge Management and  
Talent Management Influence  
on the Governance and Quality  
of Universities and Their Impact  
on Competitiveness of Private  
Universities**
- Researcher :  
**Nidya Dudija, S.Psi., M.A.**
- Scheme :  
**Doctoral Dissertation Research  
(New Proposal)**
- Fund :  
**IDR 60,000,000**

## REFERENCE

journal. As for the indexing, JRSI has been already indexed by DOI, Google Scholar, Crossref, SIS, Indonesia One Search, and Bielfeld Academic Search Engine (BASE).

According to Irfan, the DOI indexing is given for each paper published in JRSI, at a price of \$ 1 for one paper. Previously, JRSI managers also had to pay DOI.

We choose Indexing DOI, because, later, indexing number will be attached to the paper that has been indexed. For example,

KI number for registration of intellectual property will be like patents number. So, when it is searched, it will be out as indexed paper. While DOAJ is

the general indexing for every journal publication seen from its ISSN. The first four digits of the ISSN signify the campus institution. While the last 4 digits distinguish the name of the journal and the name of the title. Considering JRSI has registered DOAJ earlier, then it was acquired by Tel-U for other journals, thus, they do not need to register it again. DOAJ does not evaluate the quality of institutional research, but it only looks at the level of openness of a journal," he explained.

To facilitate its management, in addition to exchange paper and reviewer, JRSI also has more specific cooperation with a number of journal managers from other universities such as Ahmad Dahlan University (UAD), Parahyangan University, Maranatha University, Itenas, etc. JRSI also works with several associations such as APTIKOM which often hold conferences. "We offer anyone who wants to join our journals," stated Irfan.

### To Manage Journals, Focus is a Must

Irfan and Nur acknowledged that currently Tel-U journal managers only focus on the management of search, acceptance, review paper until ready to be published in OJS because the

postproduction management of the journal, if it continues into the printing process, has taken been over by the Directorate of Research and Community Service (PPM). Both agreed that they have not found any significant obstacles since switching to OJS because so far, the faculty still provides support to the journals managed under it.

However, Irfan and Nur hope that the institution will give more attention to the management of internal journals. According to them, there are two main points in the management of internal journals that must be considered. First, the level of activeness of civitas academica (lecturers and students) in writing papers and publish it. Secondly, it is necessary to regulate the workload of the lecturer (BKD) or the appreciation that becomes the manager of the journal.

JRSI is a facility for lecturers and students to publish their papers in the internal scope. So, we hope there is a more active contribution for lecturers and students to write and submit papers. Although we have priority scales to prioritize external papers due to the 60% rule, but if lecturers or students are actively writing, we can try to send papers to other journals in the FRI, the International Journal of Innovation in Enterprise Systems (IJIES) or journals outside Tel-U. This can be a driven for lecturers or students to be more active in submitting papers," explained Irfan.

On the other hand, Irfan hopes, Tel-U gives more attention to the managers of the journal. He also explained

FOTO. ISTIMEWA



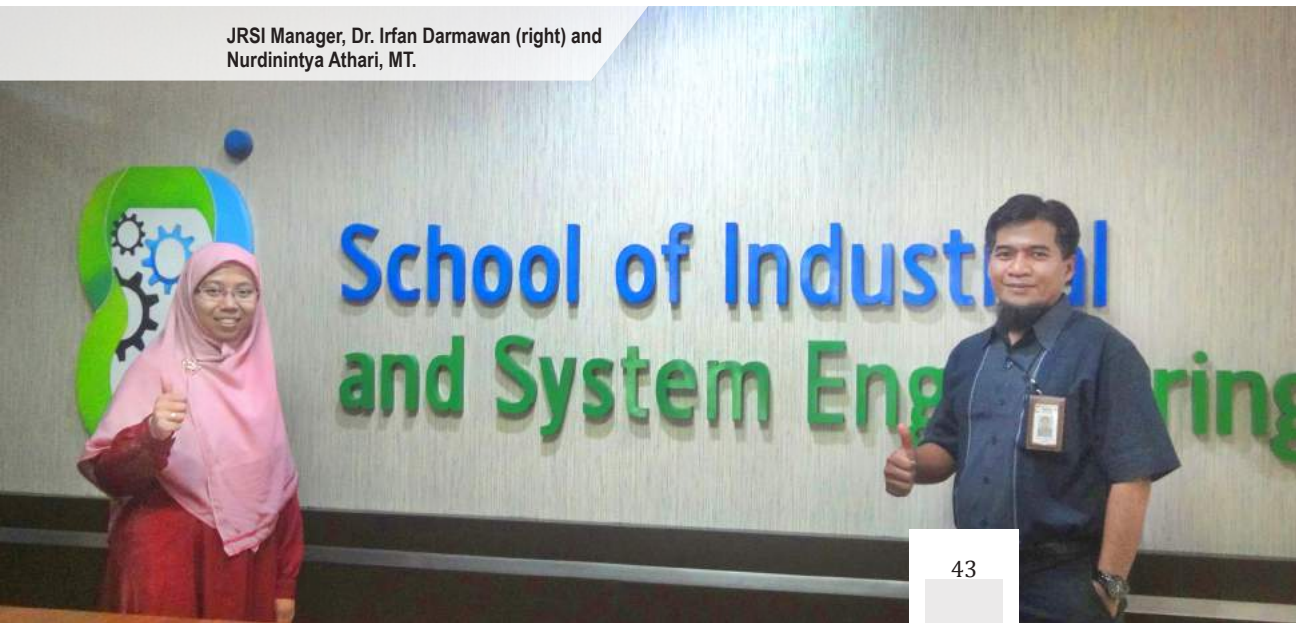
the results of a benchmarking study of JRSI managers to one of the universities whose journals have been accredited "A" from Kemenristekdikti. "We had a comparative study to Petra University or UAD where lecturers, were focused on managing the journal, put in one room. In fact, in Petra, journal managers do filtering papers before going to reviewers, so bad papers are rejected. Likewise after the reviewer, there are more checks from the manager of the journal. After they are fixed, they are started to be designed and ready to be published. These processes cannot last for a day or two days. Especially if the review results come too late, the process can be weeks. In addition to managing journals, we are also as lecturers, who have to teach, research, and certainly write our own papers. So, we hope, there is a calculation of BKD for the manager of the journal. For example

by reducing the teaching credits. This is to make us more focus on managing journals starting journal promotion, looking for qualified papers from internal and external, reviewing them, up to publishing them. In addition, the risk in managing journals is quite large. For example, if the papers are late to be published or a plagiarism paper is found, the manager of journals and institutions will be affected," He explained.

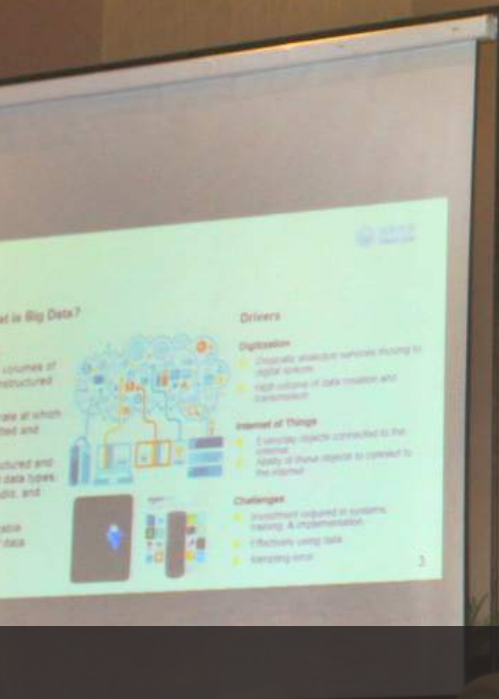
To get the best results, it takes a little effort. JRSI, that is waiting for the accreditation from Kemenristekdikti, hopes that it can get satisfactory results. However, it will be much more difficult to maintain what has been achieved. Hopefully, in the future all national and international journals in Tel-U will get satisfactory accreditation, get indexed, as well as have an on time scheduled, published and continuously published cycle.❖

- Major :  
**Bachelor of Textile and Fashion Crafts**
- Title :  
**Optimizing Gedhongan Weaving Skills through Experiments on Lungsi and Pakan as an Effort to Revitalize local Tradition (Case Study: Community in Kerek, District of Tuban, East Java)**
- Researcher :  
**Fajar Ciptandi, S.Ds., M.Ds.**
- Scheme :  
**Doctoral Dissertation Research (New Proposal)**
- Fund :  
**IDR 60,000,000**

JRSI Manager, Dr. Irfan Darmawan (right) and Nurdinintya Athari, MT.



CONFERENCE



2nd iCOPE 2017

# The Power of Big Data and the Fourth Industry



The explanation of Dr. Ulf Henning Richter in 2nd iCOPE 2017 at Grand Preanger Hotel, Thursday (24/8).





The development of the digital world actually is able to change the trend of business models in the millennial era. In fact, nowadays it has been predicted the emergence of the fourth industry which became the rapid factor of digital business.

Some Big Data characters are high volume for storing data, speed in transmitting or receiving data, capable of receiving and sending various types of data (audio, text, video), and intrinsic value for data.

"IT is estimated in 2020, there are 50.1 billion connections through Internet of Things (IoT), 1.7 million data creation per second, up to 35% average of data analysis using Big Data. The fourth industry is described as a production force that combines IoT, Cloud Technology, and Big Data. The four industry characteristics include flexible, collecting and analyzing data, using networks for communication, more energy and resources, using the internet, real time processing and monitoring, integrating technical and business processes, visualizing and portraying the true digital world, great in combining product and capital intelligence," said Associate Professor of Strategy and Global Business.

As the most populated country in the world, China becomes one of the giants in the economy world. Having great market potential, China continues to innovate to become the center of the development of digital business trends. Several major companies in this country began to expand to several other countries in Asia. Call

One impact that is felt in Indonesia today is the magnitude of the influence of e-commerce and online business that make a number of conventional business out of business. This became one of the topics in the 2nd International Conference on Organizational Performance Excellence (iCOPE) 2017 at Grand Preanger Hotel, Thursday - Friday (24-25 / 8).

According to the Keynote Speaker, Dr. Ulf Henning Richter of Tongji University's School of Business and Management, China, that is the result of the emergence of the fourth industry as the impact of Big Data penetrated in all fields.

- Major :  
**Diploma of Informatic Engineering**
- Title :  
**Design a Collaborative System for Schedulling Jumat Preacher Mosque in South Bandung**
- Researcher :  
**Hariandi Maulid, S.T., M.Sc.  
Indra Azimi, S.T., M.T.  
Amir Hasanudin Fauzi, S.T., M.T.**
- Scheme :  
**Applied Product Research (New Proposal)**
- Fund :  
**IDR 52,500,000**

- 
- Major :  
**Diploma of Informatic Engineering**
  - Title :  
**The Makig of a Virtual Reality Game Game Appetite to Preserve the Traditional Games of Indonesia**
  - Researcher :  
**Retno Novi Dayawati, S.Si., M.T.  
Tri Brotoharsono, S.T., M.T.  
Fat'hah Noor Prawita, S.T., M.T.**
  - Scheme :  
**Applied Product Research (New Proposal)**
  - Fund :  
**IDR 50,000,000**

- 
- Major :  
**Diploma of Computer Engineering**
  - Title :  
**Parking Marker with Ultrasonic Sensors Utilize Alternative Solar Energy Panels**





The opening 2nd iCOPE 2017 at Grand Preanger Hotel, Thursday (24/8).



Estimated in 2020, there will be 50.1 billion connectivity through Internet of Things (IoT), 1.7 million data creation per second, up to 35% average of data analysis using Big Data. The fourth industry is described as a production force that combines IoT, Cloud Technology and Big Data.

it Alibaba Group, Baidu, Tencent, JD.com, In fact, China's digital giants have dared to invest in Indonesia. Tencent poured trillions of dollars for Go-Jek, Alibaba behind Lazada.com, and much more. This phenomenon shows the economic strength of China will be an opportunity as well as a threat to the surrounding countries, especially in the digital world. The power of Big Data Analysis and collaboration and synergy in 4.0 industry in China is the main factor.

Within the theme "Ecosystem and Innovation Excellence in Enhancing Organization Competitiveness and Sustainability", the conference involved a number of universities in Bandung, including Telkom University (Tel-U). This activity was led by Binus University as a permanent organizer. The issue of Big Data and 4.0 industry is a hot topic discussed. Changes in business trends in the millennial era has been felt almost all countries, including Indonesia.

Dr. Ulf continued, the Big Data contributes to sustainable development. That is, alleviating poverty, hunger, improving better and healthier life, quality education, gender equality, sanitation and clean water, clean and affordable energy, jobs and economic growth. Further industrial development, innovation and infrastructure, reducing gaps, sustainable communities and cities, responsible production and consumption. The Big Data can also impact climate rescue, underwater life monitoring, ease of information in real time, strong institutions, peace and justice, and cooperation for various purposes.

"For China, there are several advantages that can be used to strengthen 4.0 industries by 2025, the growing market, big companies, strategies, and

human resources. Several supporting sectors in China include new technology information, numerical control equipment, aerospace equipment, sophisticated shipbuilding, railways, energy storage, new materials, health equipment, agricultural engineering, and power tools," he continued.

In order to survive and enhance growth in the global economic competition, 2nd iCOPE 2017 comes with an exploration of emerging topics. One of them makes the organization is expected to always innovate

**SCHOOL OF APPLIED  
SCIENCE**



in products and business. Innovation can only be created if the organization can be a good ecosystem, embodied with organizational management, leadership, strategic planning, customer focus, markets and resources, develop knowledge management, and focus on business and operations. All of these things can improve the performance of the organization to be good (performance excellence).

Besides the conference, 2nd iCOPE 2017 also held Call for Paper (CfP) which was

attended by 100 participants from various universities of Indonesia and abroad. The topics discussed in CfP include Leadership; Strategic Planning; Customer & Market Focus; Information, Measurement, Knowledge Management, & Information Technology; Human Resources; Operational Focus; and Communication.

Apart from China, there was also CEO of PT Pos Indonesia, Gilarsi Wahyu Setijono, as the second Keynote Speaker. ❖

■ Researcher :  
**Giva Andriana Mutiara, S.T., M.T.**  
**Anak Agung Gde Agung, S.T., M.M.**  
**Rini Handayani, S.T., M.T.**

■ Scheme :  
**Applied Product Research (New Proposal)**

■ Fund :  
**IDR 80,000,000**

■ Major :  
**Diploma of Computer Engineering**

■ Title :  
***Smart Guide Cane For The Blind***

■ Researcher :  
**Giva Andriana Mutiara, S.T., M.T.**  
**Gita Indah Hapsari, S.T., M.T.**

■ Scheme :  
**Applied Product Research (New Proposal)**

■ Fund :  
**IDR 63,500,000**

■ Major :  
**Diploma of telecommunication Engineering**

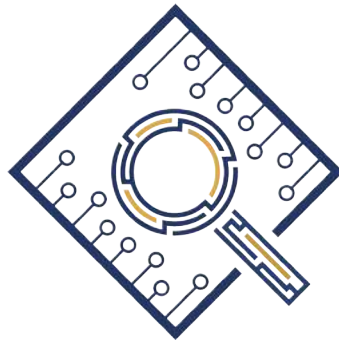
■ Title :  
***Internet of Things: Modelling and Implementation of Vital Sign Monitors***

■ Researcher :  
**Sugondo Hadiyoso, S.T., M.T.**  
**Yuyun Siti Rohmah, S.T., M.T.**  
**Rohmat Tulloh, S.T., M.T.**

■ Scheme :  
**Applied Product Research (New Proposal)**

■ Fund :  
**IDR 65,000,000**

CONFERENCE



# ICoDIS

## The Meeting Place for the Information Science Researchers

The advancement of digital technology is no longer bounded to a state territory. Language barriers can now be solved in cross-country research collaboration processes. This was disclosed by Prof. Toru Ishida from Kyoto University as a Keynote Speaker in the International Conference on Data and Information Sciences (ICoDIS) 2017, at Damar Telkom University (Tel-U) Building, Tuesday - Wednesday (5-6 / 12). Through his presentation entitled "The Language Grid for Supporting Intercultural Collaboration," he has launched the Language Grid project to realize server integration for language services using translational engines.

**"S**o far, there are 4 servers in Asia and more than 200 registered language services from 22 countries. Using the Language Grid, we have been working with international NGOs for 4 years to support communication between rice harvesting skills in Japan with their

farmers and children in Vietnam. During this experience, we finally understood the naturalness of intercultural collaboration and we faced different difficulties. Some problems are very 'bad' and not easily defined, because they are in their sphere and open network structure," explained Toru Ishida.

ICoDIS 2017 is the first annual event of the School of Computing (Fakultas Informatika, FIF) Tel-U. The theme of this year was "Bridging Data Science and the Internet of Things to Enhance Technology Competitiveness". Apart from Japan, ICoDIS 2017 also presented Prof. Dr. Naomie Salim



SCHOOL OF APPLIED  
SCIENCE

from the Faculty of Computing, Universiti Teknologi Malaysia (UTM), and Dr. Eng. Khoirul Anwar from the School of Electrical Engineering, Tel-U.

In addition to the explanation from the three keynote speakers, ICoDIS 2017 also held a plenary session and a contributive paper at the Bangkit Building. Of the 86 papers submitted, only 59 papers were received, so the acceptance rate of ICoDIS was 68%. The papers came from presenters in seven countries, namely Indonesia, Malaysia, Thailand, Japan, Britain, France and India. While the number of participants ICoDIS 2017 as many as 65 people, which consisted of presenters and invited guests.

"In IoT era nowadays, the information is very much, even booming. Well, speakers from Malaysia discussed Big Data Analytics which

was very useful in processing the the number of very much data into the information that can be obtained by anyone. For example, customer data can be used by the company when it will create a product whose specifications want to be tailored to the wishes of prospective customers. This can take advantage of Big Data Analytics, so that later can take the right decision," explained Chairman ICoDIS 2017, Prof. Adiwijaya, M.Sc.

This activity extended the row of international conferences held by Tel-U. According to Adiwijaya, this conference more focused on Information, Data, and Computational Linguistic. Working closely with the Indonesia Data Scientist Society (IDSS) and the Indonesian Association of Computational Linguistics (INACL), the conference became a venue for researchers in the fields of

- Major :  
**Diploma of telecommunication Engineering**
- Title :  
**Multi Site Implementation of USRP (Universal Software Radio Peripheral) with Independent Power Supply for Communications in remote Areas**
- Researcher :  
**Hafidudin, S.T., M.T.  
Mochammad Fahru Rizal, S.T., M.T.  
Dadan Nur Ramadan, S.Pd., M.T.**
- Scheme :  
**Applied Product Research (New Proposal)**
- Fund :  
**IDR 65,000,000**

- 
- Major :  
**Diploma of Marketing Management**
  - Title :  
**Study of Chromium Sulphate Composition Recycled from Liquid Tanning Industry to Skin Quality**
  - Researcher :  
**Donni Junipriansa, S.Pd., S.E., M.M.**
  - Scheme :  
**Doctoral Dissertation Research (New Proposal)**
  - Fund :  
**IDR 57,000,000**
- 

Keynote Speaker ICoDIS 2017 take a picture with committee at Damar Building, Tel-U, Tuesday (5/12).



Plenary Session ICoDIS 2017 at  
Multimedia Room, Tel-U.

information, data, and computing to gather and share their research.

Regarding the constraints, we had a little trouble drawing the number of participants. To that end, we worked closely with IDSS and INACL, so researchers in this field can be facilitated. For his papers will be published in the International Physics Journal published IOP and already indexed Scopus. Typically, conference papers must wait to be indexed. But this time it was not. So, the papers

received at ICoDIS will be published in JPCS and directly indexed Scopus,"continued Adiwijaya.

He hoped that ICoDIS 2017 can benefit Tel-U as the organizer and the academic community in general. "We hope Tel-U can get qualified paper. Second, sharing this knowledge can solve problems in the field of information science and data in order to make a positive contribution to the progress of the nation," expected Adiwijaya.

**SCHOOL OF APPLIED  
SCIENCE**

- Major :  
**Diploma of Computer Engineering**
- Judul :  
**Optimization on Two Way Relay Channel with Space-Time Coding- Network Coding (STC-NC)**
- Researcher :  
**Muhammad Iqbal, S.T., M.T.**
- Scheme :  
**Doctoral Dissertation Research (New Proposal)**
- Fund :  
**IDR 55,000,000**

There were three groups of science in ICoDIS 2017, namely Data Science, Computational Linguistics, and Information Sciences. Each field of science had some acceptable Call for Paper (CfP) topics in ICoDIS 2017.

*First*, Data Science included Data Clustering and Clasifications; Statistical Model in Data Science; Artificial Intelligence and Machine Learning in Data Science; Data Visualization; Data Mining; Data Intelligence; Business Intelligence and Data Warehousing; Cloud Computing for Big Data; Data Processing and Analytics in IoT; Tools and Applications in Data Science; and Vision and Future Directions of Data Science.

*Second*, Computational Linguistics consisted of Text Mining; Text Classification; Information Retrieval; Information Extraction; Machine Translation; Sentiment Analysis; Summarization; Semantics; Syntactic Parser; Question Answering; Speech Processing; Mathematical Linguistics and NLP Applications.

*Finally*, Information Science consists of Cryptography and Steganography; Digital Forensic; Social Media and Social Network; Crowdsourcing; Artificial Intelligence; Computational Intelligence; Collective Intelligence; Graph Theory and Computation; Network Science; Modeling and Simulation; Parallel and Distributed Computing; and High Performance Computing. ❖



Dr. Norma Alias explain Big Data Analysis in Plenary Session ICoDIS 2017 at Multimedia Room, Tel-U.



Program CPP

# Researchers Should Synergize With Each Other

Merupakan p...  
yang diberik...  
skema insent...  
lembaga pengelola hasil...  
pengembangan, yang produknya...  
dalam bentuk *prototype*...  
disempurnakan dan disiapkan...  
inovasi komersial (dari p...  
laboratorium menjadi *prototype* industri dan  
siap di hilirisasi)



Sharing Session the receiver of CPPBT research grant  
2017 at Multimedia Room, Tel-U.

**In 2017, four Telkom University (Tel-U) researches had successfully passed the research scheme of Technology-Based Beginner Candidate Company (CPPBT) from the Ministry of Technology and Higher Education (Kemenristekdikti). To improve performance in 2018, Directorate of Research and Community Service (PPM) held Socialization of Research Scheme CPPBT 2018 in Room Multimedia Building 2nd Floor Building.**

Recording to Vice Rector IV for Research and Student Affairs, Dr. Rina Pudji Astuti, MT., to go to Research & Entrepreneurial University, Tel-U needed to strengthen research aspect. "So far, research and community service was like running on their own. In the future, everything would work together. The Group of Experts (KK) would often be invited to strengthen Tel-U's research and abdimas. In 2018, there would be an addition of the Directorate under the Vice Rector IV, including the addition of 5 Research Centers (RC) and 1 Innovation Center, namely BTP which had joined with Tel-U," he explained.

Future Tel-U studies will not only be directed to journal publications and proceedings, but must be product-oriented

Ristekdikti, only 205 proposals passed the CPPBT scheme and were successfully financed. "Most of the causes were seen from the factor of product superiority compared to others and business prospects in the future," said Eka.

On this occasion, three chief researchers, who successfully escaped CPPBT, namely Inung Wijayanto, ST., MT (MyGlucoby); Hilman Fauzi TSP, ST., MT (Hbey); and Ledy Novamizanti, ST., MT (EggQ), were presented. All three shared their experiences when doing CPPBT research. "Most lecturers are very rigid and journalistic-based journaling and proceeding, but not prospective. In fact, in this CPPBT research should be product-oriented and KI. Be like sales to promote a product that is created.

and Intellectual Property (KI). CPPBT research scheme one of them. Unfortunately, in 2017 Tel-U had not reached the target for research that passed the CPPBT scheme.

Based on the information submitted by Telkom's PPM Research and Publication Manager Eka Widhi Yunarso, ST., M.MT., of the 733 proposals submitted to



**Participant of CPPBT Research Socialization 2018.**

Do not always think about the ergonomic side or the look of the product, but how functional the product is," advised Inung.

Some tips and tricks were given to all three lecturers who came from KK. Among other ways to make a research proposal in accordance with the provisions of Ristekdikti. While related products, Inung and Hilman suggested that the proposal included product validation and market validation, though not too detailed. Products made can be either hardware or software products (applications).

"The core, all must be synergized in one team or with another team that is still one KK. In fact, if possible, do not cover yourself only in the COW. But, try to synergize with other researchers from other areas of KK, who knows will get new ideas for future research," said Inung. ❖

**Vice Rector IV for Research and Student Affairs, Dr. Rina Pudji Astuti.**





INDEXING  
SCOPUS  
PUBLICATION  
2017

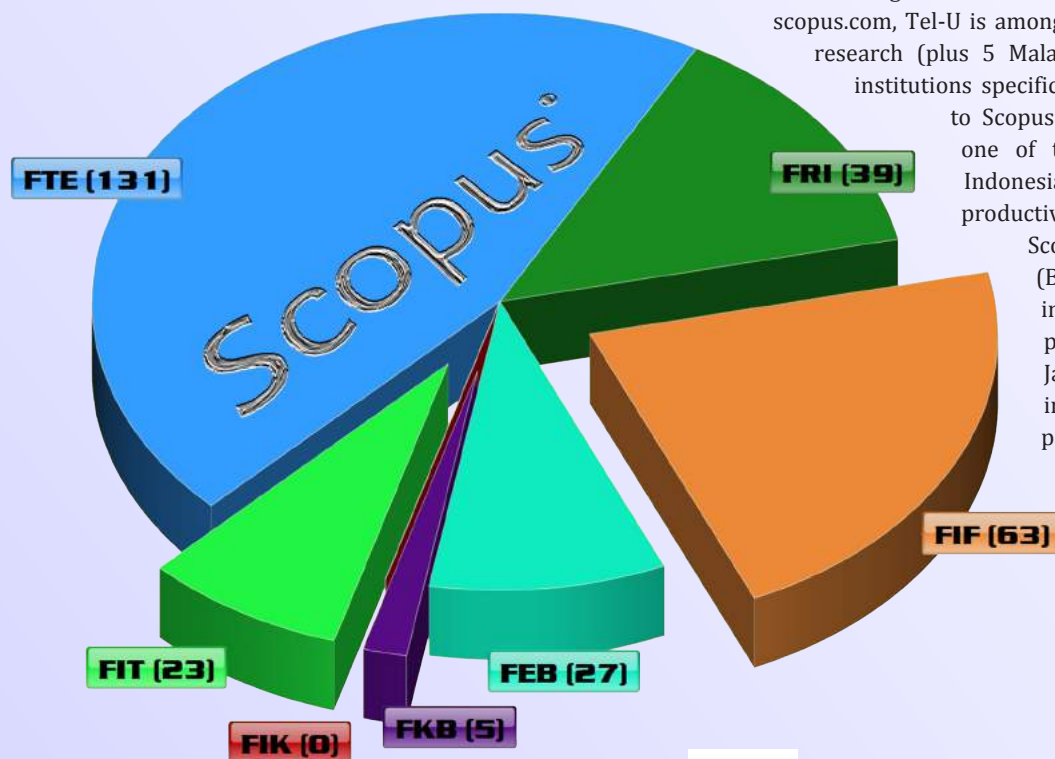
# 5 Years, Tel-U Has Been Productive in Research

Although it will only be 5 years of age, Telkom University (Tel-U) does not want to be left behind in the work. This campus also has resources that have experienced in the world of higher education for more than 20 years. There is no doubt, Tel-U is able to accelerate to become one of the universities that is counted. Tel-U has already declared itself to be a Global Entrepreneurial University (GEU) in 2038. To get to that direction, this campus strengthens

aspects of Three Pillars of Higher Education (Tri Dharma Perguruan Tinggi); one of them is research field. Slowly but surely, Tel-U has improved its achievement in research since 2013. In fact, one of the credit points of research performance is that the publication of paper in Tel-U has exceeded 1,000.

This year, Tel-U is able to achieve achievement in terms of Scopus indexed publications that becomes internationally reputable and is the goal of most researchers and authors. Launching [www.scopus.com](http://www.scopus.com), Tel-U is among the 50 most productive colleges in the research (plus 5 Malaysian national and Malaysian research institutions specifically selected as comparators) according to Scopus. Located in 17th place, Tel-U becomes

one of the two private universities (PTS) in Indonesia, which entered the top 20 most productive universities in research according to Scopus, besides Bina Nusantara University (Binus). This assessment is based on an increase in the number of Scopus indexed paper publications from July 11, 2013 to January 11, 2018 in each college. Tel-U has increased the number of Scopus indexed paper publications significantly since 2013 by 56 papers to January 11, 2018 as many as 974 papers.❖





## CALL FOR PAPERS

Jurnal Ilmiah LISKI terbit secara berkala, dua kali dalam setahun. Dengan jadwal terbit bulan Februari dan September. Jurnal Ilmiah LISKI dapat diakses di <http://journals.telkomuniversity.ac.id/index.php/liski>

LISKI merupakan singkatan dari Lingkar Studi Komunikasi. Jurnal ilmiah LISKI mempublikasikan karya ilmiah hasil penelitian di bidang kajian ilmu komunikasi, dengan menggunakan pendekatan kualitatif, dan/atau kuantitatif. Jurnal ilmiah LISKI membuka kesempatan bagi para peneliti dari berbagai bidang, untuk mempublikasikan karya ilmiah hasil penelitian yang mengkaji fenomena komunikasi.

### KETENTUAN:

*bodynote.*

1. Karya ilmiah asli, merupakan pemikiran sendiri, hasil penelitian, kajian yang relevan dengan misi publikasi ilmiah, dan belum pernah dipublikasikan.
2. Naskah ditulis dalam bahasa Indonesia atau bahasa Inggris, diketik satu setengah spasi pada kertas ukuran A4 potrait (21 x 28 cm). Panjang tulisan maksimal 7000 kata (atau 15 halaman), minimal 4000 kata (atau 8 halaman), dengan jenis huruf Calibri ukuran 11, ukuran kertas A4, dan margin atas 3 cm bawah 4 cm kiri 4 cm, dan kanan 3 cm .
3. Naskah terdiri dari judul, nama penulis, abstrak, kata kunci (*keywords*), pendahuluan, kajian pustaka, metodologi (metode), hasil dan pembahasan, kesimpulan dan daftar pustaka. Kutipan menggunakan
4. Abstrak ditulis dalam 2 (dua) bahasa yaitu, bahasa Indonesia atau bahasa Inggris, abstrak memuat 150 – 200 kata, ditulis dalam satu alinea, dibawah abstrak dicantumkan 3 (tiga) hingga 5 (lima) kata kunci.
5. Naskah harus disertai dengan identitas lengkap penulisnya yang terdiri dari: nama (tanpa gelar), nama perguruan tinggi atau instansi, dan email.
6. Dewan redaksi berhak melakukan penilaian, koreksi, penambahan, pengurangan dan perbaikan lainnya terhadap naskah yang akan diterbitkan.

<http://journals.telkomuniversity.ac.id/index.php/liski>

***Deadline per Mei dan Oktober***



# To Increase Literacy with Publication

Many people relate literacy only to the ability to read. In fact, literacy has a broad meaning for various fields, which means the ability to understand, analyze and deconstruct something. So literacy is very important to anyone as a manifestation of a person's achievement in the field he or she occupies. In fact, world literacy day has been commemorated every year that fall on September 9th.

To increase awareness of the importance of literacy, Telkom University (Tel-U) held Tel-U Literacy Event with theme "Literacy as the key of life", Monday - Friday (11-15 / 9) filled with seminars and workshops. One of the seminar "Research & Indexing" which presented Director of Intellectual Property Management (KI) Ministry of Research, Technology and Higher Education (Kemenristekdikti), Dr. Sadj, M.Sc, DIPL. (BIOTECH) and LIPI Information Researcher, Dr. Lukman.

"Literacy as the key to life is great, because it involves various fields. For example, because my background is agriculture, my literacy may be good in agriculture, but not necessarily in banking. One of the supporters of literacy is with intellectual property. Currently, the number of Professors in Indonesia is only around 5,000s, in fact they should contribute to increase scientific literacy greatly. Related scientific publications, Indonesia is currently in ranked third in Asia, and its development is quite exponential. But there are currently only 267 accredited national journals, while their needs reach 7,000s. Thus, the open access is very permissible," he continued.

To improve literacy skills among academics, Kemenristekdikti continues to encourage a research climate and an increasing number of publications in Indonesia. One of them is by building a portal Science and Technology Index (SINTA). SINTA is a measure of research performance and publication of researchers / authors / writers, Intellectual Property (KI), journal performance, performance of science and technology institutions and others, to

LiteracyEventSpeakertake  
a picture with committee

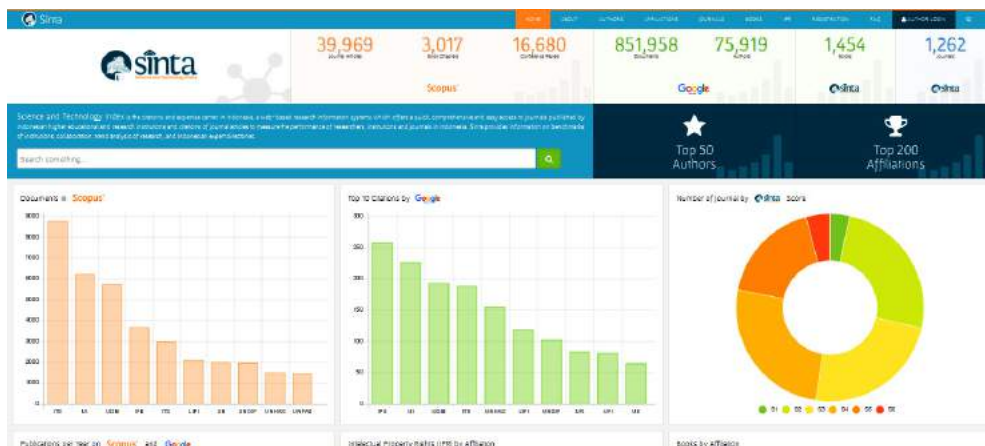


encourage scientific publishing culture. SINTA also becomes the first indexing portal in Indonesia while in abroad, they are a lot of media for indexing, such as Google Scholar, DOAJ, Scopus to Clarivate Analytic or Thomson-Reuter. Each of these institutions has a difference in assessing the entitled entries and their indexed entries. This was disclosed researcher LIPI Information Field, Dr. Lukman, ST., M. Hum.

"Why does Google Scholar, DOAJ and Scopus have different values for indexing? Because all of the three have differences in the process of assessing the journals that will go into them. For example Google Scholar does not search for journals to be indexed. At the time we register, at the same day Google Scholar will verify it. It is different from DOAJ moreover, Scopus is more difficult," explained Lukman.

On that occasion, Director of Research and Community Service (PPM) Tel-U, Dr. Palti MT. Sitorus, MM questioned about the dualism of the brand on this campus that should be used for researchers at the SINTA portal. Currently, for the National Lecturer Number (NIDN) of Tel-U lecturer in Kemenristekdikti forlap registered as Telkom University, while the brand that will be used is Telkom University. Finally, there are lecturers who register at SINTA using the name of Telkom University and Telkom University. According to Lukman, the changes can be done to the system, as long as there is a brand decision of the institution that will be used so that Tel-U campus may have the same brand.

"Perhaps for the moment it is better better to use the name of Telkom University first, just in case the NIDN does not appear.



Later, we will make changes to the system, so that this campus can be similar to use the name of Telkom University in accordance with the wishes of the institution," said Lukman.

## Publication Performance to be Evaluated

As a follow up, LIPI re-socialized SINTA portal in Tel-U on Wednesday (25/10) at Damar Building. Hence, all Tel-U lecturers and researchers enroll in the SINTA portal and upload their publications. The reason, according to Permenristekdikti No. 20 Year 2017 on the Provision of Honor Professional Allowance, all research lecturers will get performance appraisal through SINTA. Assessment of lecturers' research performance begins to take effect on November 18, 2017 in accordance with Circular Letter of Directorate General of Science and Technology Science Resources (SDID) related to Scientific Publication Performance Appraisal, especially for Head Lectures and Professors.

"This performance assessment, conducted after November 18, 2017. The assessment factor is based on the number of scientific publications displayed by lecturers and researchers at SINTA Portal. It is not from SINTA account. So, even if the lecturer is already on a list of SINTA, if there is no his or her publication, it will be in the red category," he explained.

The assessment of scientific publication performance is divided into three, green, yellow and red. According to Lukman, researchers who get the green category means having a pretty good scientific publication performance, yellow means less performance, while red for poor publicity performance. The impact, related to the provision of lecturer benefits and researchers. For those who get red, it will be revoked. Even so, Kemenristekdikti will be very careful in doing this assessment. "But this concerns the livelihood of many people and sensitive, so we have to be careful in conducting the evaluation process of the performance of this scientific publication," said Lukman. ❖



# Paper Publication is Like “Bread & Butter”

In 2018, Telkom University (Tel-U) is targeting 1,000 paper publications, especially in indexed journals (Scopus, ISI-Thomson Reuter, IEEE, and others). To achieve this, an intensive effort is needed. One of them is helping lecturers and researchers to increase the number of their paper publications. Because passion lecturers and researchers in the paper publications are not the same. Some have done it themselves, some still need to be encouraged to publish the paper.

It is highly realized by Directorate of Research and Community Service (PPM) Tel-U as the spearhead of universities in the field. For that, the Directorate of PPM Tel-U held a Coaching Clinic Making and Publication of Scopus Indexed Paper on Friday (3/11) at Bangkit Building 2nd and 5th Lecture. Partnering with University Tun Hussein Oon Malaysia (UTHM), the Directorate of PPM presented three Associate Professors who already generated a lot of Scopus indexed publications. They are Dr. Shahreen Kasim, Dr. Mohd. Farhan Bin Md. Fudzee, and Dr. Azizul Azhar Ramli from the Faculty of Computer Science & Technology Technology, UTHM.

"This activity is to improve the publication of 4-year-old Tel-U lecturers. We will give the tricks so that the lecturers can publish a paper that was initially not considered to be in Scopus. But, it needs to be done step by step. Just like small children, some lecturers already have a big passion in paper publication, but some others must be pushed. So, we started by making a publication paper based on interests," said Shahreen Kasim.

Shahreen continued, the faculty where he currently works has only 35 people holding S3 degree, but UTHM itself has been ranked third for the acquisition of Scopus indexed publication. He also saw that nothing is impossible for Tel-U which has more than

700 lectures. "Today's Tel-U lecturers are over 700. If one person only publishes his paper and indexes Scopus, there will be more of us. We also do not want to give up even though there are only a few Ph.D holder. For us, nothing is impossible, everything is possible," he said.

Meanwhile Dr. Mohd. Farhan revealed, journal publication should be considered as Bread & Butter, something that cannot be separated and filled each other with teaching and research. So, it should start with a sense of love or interest. Although, lecturers still have to adjust to the target of the college, to produce a good Key Performance Index (KPI). Similarly, UTHM is seriously increasing

the number of Scopus indexed lecturers. One of them held a bootcamp in a paper writing training workshops for lecturers for 3 days. After completion of the training, lecturers are required to submit at least one paper that must be published.

"I began to seriously publish the paper through the Final Project (TA) S1 students. Those who are asked to make a paper with some guidelines and revisions from us. The first year using this trick, from 8 student papers submitted turned out 2 of them published, even awarded. Initially it was hard when it came to modifying the student's TA into a quality paper. But the spirit, for us, student papers should be published, because they have tried," said Shahreen.

In addition to assisting students in paper publications, UTHM lecturers also often help each other to revise the papers belonging to other lecturers' students or to site other lectures' paper. According to Shahreen, this increases self-satisfaction, as it will help improve the faculty and university KPI.

In this coaching clinic, the speaker had time to review one of the lecturer's paper. Some sections of the paper were revised by all three, in order to look like a scientific paper rather than a student TA project. The review section starts with title writing, introductory writing, English grammar suitability, placement of flowcharts and diagrams in papers, state of the art, acknowledgment to conclusions.

"Try not to translate the language of writing paper into English using google translate for the whole paragraph, because the meaning will be ambiguous. It is better if you can do

your own translation into English or reviewed by colleagues who also understand about our background," said Azizul.

While Farhan highlights the writing of the title of the paper. According to him, a good title should contain what has been made, the method used, and what significance. While for the introduction does not need much, it

Also add future work, so that research can proceed, as well as thanks for institutions that fund research. The number of paper pages indexed in Scopus is usually about 6-10 pages," he explained.

Accepting positively for the coaching clinic, Director of PPM Tel-U, Dr. Palti MT Sitorus, revealed, the publication habit is still



participant listening to Dr. Mohd. Farhan explanation in Coaching Clinic for makin and publish Scopus indexing paper, Friday (3/11).

is important to include the things that are required. Namely, motivation (usefulness of what is made), problems, objectives (goals), methods, significance, results, and conclusions.

"Reference may only for last 5 years and the writer avoids references coming from the website. If it is possible, the reference is better come from the journal. For writing conclusion, please it is made in paragraph form, not points.

not evenly distributed in Tel-U. "Indeed, there are lecturers who skyrocketed and diligent publish their paper, even indexed, but there some also to be encouraged. Not to mention if it is constrained by the busy lecturer in the structural. We are also thinking of ways to improve the publication of lecturers, by incorporating aspects of publication in the payroll scheme of lecturers," said Palti. ❖

# Jurnal IDEALOG

Jurnal Desain Interior & Desain Produk  
ISSN 2477-0566

## Pengantar Redaksi

Dunia Desain adalah sesuatu yang dinamis dengan daya kreativitas dan inovasi yang selalu menjadi acuan dalam melahirkan sebuah karya, dan berbagai perubahan yang terjadi di lingkungan praktisi, akademisi dan peminat bidang ini. Lingkup Desain yang difokuskan pada Interior dan produk ini adalah sebagai sebuah proses pengolahan ruang dan produk, yang tidak hanya terbatas pada perwujudan karya, namun dalam menyampaikan IDE serta perumusan karangan ilmiah yang berujung kepada penyampaian informasi tersebut dalam bentuk DIALOG. Penamaan Jurnal Idealog adalah penggabungan dari kata Ide dan Dialog, seperti yang dimaksudkan diatas. Dengan demikian, Jurnal ini diharapkan sebagai suatu bentuk diseminasi Ide dan Dialog dari bidang ilmu Interior dan Produk desain yang dapat secara terus menerus melahirkan informasi dan penelitian yang berbobot, dan dapat bermanfaat bagi bidang ilmu pengetahuan Desain.

## Redaktur

Ketua :  
Uly Irma Maulina Hanafiah, ST., MT.  
Anggota :  
Ratri Wulandari, ST.M.Sc.  
Fajarsani Retno Palupi S.Ds., M.Ds.  
Rangga Firmansyah, S.Sn., M.Ds.  
Irwan Sudarisman ST.MT.  
Dandi Yunidar S.Sn., M.Ds.  
Terbit Setya ST., M.Ds.

## Mitra Bestari:

Dr. Krismanto Kusbiantoro, ST,MT (MARANATHA)  
Dr. Suastawi Triatmodjo (ISI Jogya)  
Dr. Deni Hermawan, M.A. (ISBI)  
Timoticin Kwanda PhD. (PETRA)  
Dr. (Cand) Rahmawan Dwi Prasetya, S.Sn, M.Si (ISI logya)

## Alamat Redaksi :

Redaksi Jurnal Idealog  
Gedung Bangkit Lt.2,  
Kawasan Bandung Technoplex  
Universitas Telkom.  
Jl. Telekomunikasi No. 1, Terusan Buah Batu,  
Dayeh Kolot, Bandung 40257

E-Mail :  
[Idealog@telkomuniversity.ac.id](mailto:Idealog@telkomuniversity.ac.id)  
[ratriwulandari@tcis.telkomuniversity.ac.id](mailto:ratriwulandari@tcis.telkomuniversity.ac.id)

Call  
For  
Paper !



# The Indexing Directory of Open Access Journals (DOAJ) Offers DOAJ Seal

**T**elkom University (Tel-U) has 17 journals for publishing papers from internal and external researchers. In addition to encouraging an accreditation for the journals, Tel-U also expects that these journals can be indexed. One of the indexing places is the Directory of Open Access Journals (DOAJ) that has been recognized among lecturers and researchers around the world. Therefore, to achieve this goal, there are several steps that must be taken care by the journal managers apart from proposing the submission to DOAJ.

To facilitate the managers of the journal, Tel-U held a socialization of DOAJ on Thursday, 9th of November 2017 at the 2nd floor of Gedung Bangkit, Telkom University. At this socialization event, there has been the DOAJ Ambassador Region Indonesia 4, Sudarmawan Samidi, Lc., M.Mgt., delivered the materials in order to attract the journal managers who want to improve the quality of their Open Journals. This is related to migrating Tel-U journals to the Open Journals System (OJS).

"There are some requirements for the journal to be indexed DOAJ, one of them is to have a website that has been registered in ISSN. This ISSN check can be done through thekeepers.org, as it is connected to LIPI. Furthermore, the journal is becoming an open access and then, have at least 5 articles per

issue. However, journal websites should not be in the form of WordPress or blogs that are posted on the campus website. This could lead to a refusal of submission. In addition, the use of the language in the journal website does not necessarily use English. There were also some Arabic and Indonesian journal websites that I have reviewed before," he explained.

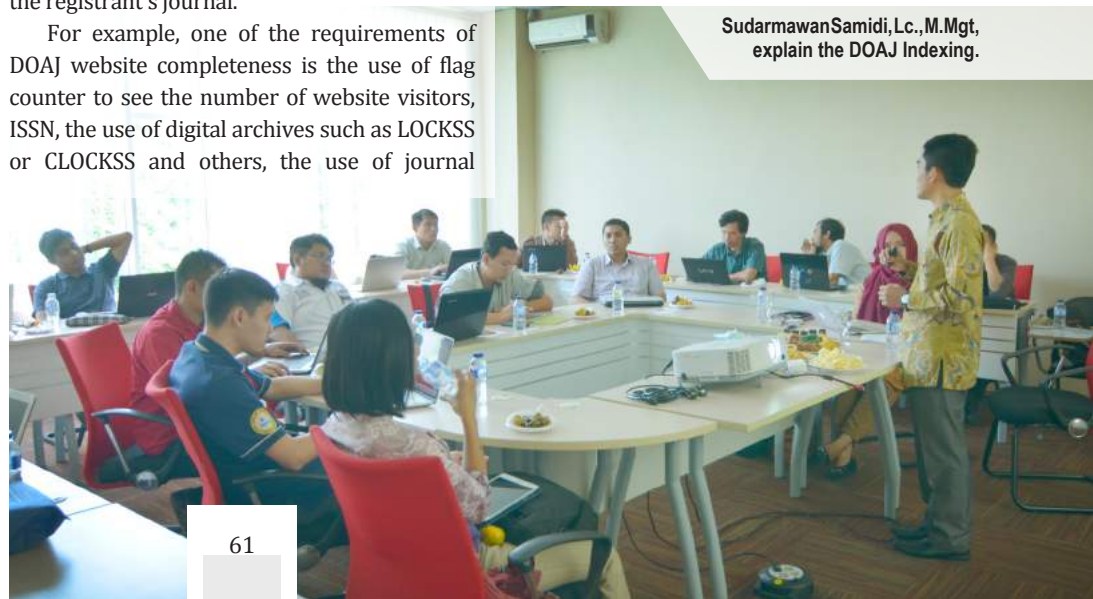
Sudarmawan said that there are 58 questions should be answered by the journal managers in registering the journals to DOAJ. These questions are related to the completeness of the journal website along with the verification which can be checked directly by the DOAJ examiners team. Although these questions seem easy, it may not be easy to be fulfilled by the registrant's journal.

For example, one of the requirements of DOAJ website completeness is the use of flag counter to see the number of website visitors, ISSN, the use of digital archives such as LOCKSS or CLOCKSS and others, the use of journal

identifiers such as DOI or ARK and others or the use of CC-BY, CC-BY-NC, and others. This requirement is still hard to be fulfilled by the journal managers because it needs a lot of money.

"DOAJ also offers the predicate of DOAJ Seal for the journals that have been proposed for indexing. DOAJ Seal is the highest level of DOAJ indexing such as Q1 in Scopus. However, DOAJ Seal is not directly related to the impact factor or quality of education, but rather it leads to an open access to a journal. Besides, DOAJ Seal will accelerate the increase of author rank in SINTA portal. Indexing DOAJ will also help lecturers, especially those who still have an Expert Assistant and Lektor as the Academic Functional Position (JFA)," he added.

To obtain the DOAJ Seal predicate, the entry journals have to meet the number of heavier requirements. However, Sudarmawan stated that DOAJ Seal is an alternative choice while the DOAJ itself is the main priority. ❖



Sudarmawan Samidi, Lc., M.Mgt., explain the DOAJ Indexing.

# Tel-U has Good Management as Supported by ISO

Research activities at Telkom University are already running. Some of them are external fund research from the Ministry of Research, Technology and Higher Education (Kementerian Riset, Teknologi dan Pendidikan Tinggi, Kemenristekdikti).

Monitoring and evaluation process  
for Tel-U research performance.



Research Monev Assesor,  
Prof. Dr. Kuncoro Dihadjo, ST., MT.

Therefore, by obtaining financial support from the Ministry, Tel-U periodically receives monitoring and evaluation from the government regarding its research performance. In 2017, the monitoring and evaluation have been conducted on Thursday, November 9, 2017, on the 5th floor of Gedung Bangkit, Telkom University.

The monitoring and evaluation activities were officially opened by Vice Rector IV for Research and Student Affairs, Dr. Ir. Rina Pudji Astuti, MT, who was accompanied by the Director of Research and Community Service (Penelitian dan Pengabdian kepada Masyarakat, PPM), Dr. Palti Marulitua Sitorus, MM. "Currently, Tel-U is still focusing on publication and education in addition to research as part of a plan towards World Research University in 2023. After that, in 2028, we will go to World Entrepreneurial University," said Rina.

Tel-U has developed significantly in terms of research achievement and publication. "In August 2016, referring to PPM's research performance, there have been 438 ongoing internal funding studies and 37 external studies. In December 2016, there were 452 publications indexed by Scopus, 283 Intellectual Property, and the 32nd college

rankings based on the Science and Technology Index (SINTA)," said Rina.

Meanwhile, the monitoring and evaluation officer for this time is Prof. Dr. Kuncoro Dihadjo, ST., MT from Universitas Negeri Sebelas Maret Solo. At the end of the examination, Kuncoro revealed that Telkom University's research performance is good. "Standard Operational Procedure (SOP) has been done well as can be seen from the document management. Satisfactory results of monitoring and evaluation, especially from the management side cannot be separated from the important role of ISO's support to Tel-U, especially with the powerful principle of 'record what is done, do what has been recorded'," he said.

Kuncoro provided some inputs for Tel-U to improve research performance. One of them is about the research output incentives. According to Kuncoro, Tel-U's research outcome appreciation is quite good with the incentive of publication and Intellectual Property.

"Currently, the prevailing Intellectual Property incentives are still institutional. The hope for the future is to create an incentive development to make researchers more passionate. In addition, there is also an expectation that future intellectual property will be more commercial, not merely reproduce patents, industrial designs, etc. When it is more commercial so as the products can be sold and can generate income for Tel-U. Therefore, if these expectations are able to be realized, it will make the inventors feel more comfortable," he said.

Other inputs are related to the Memorandum of Understanding (MoU) arrangement from commercialization and

capacity building measurement through a good conference. "I see Tel-U is very supportive for conferences especially the Scopus-indexed conference. This can be seen from the rapid achievements in Scopus indexed publications. Another one is related to system development that needs to be verified with the input data in i-Gracias. There is one step away that can make the data more stable. This verification is important because it relates to the researchers' incentives, both publications and other. Moreover, if it is possible that the i-Gracias becomes an integrated tool, so it will be better," he explained.

Kuncoro also suggests Tel-U imitate UNS in using a work indexing tool of researchers using the researcher's personal index. According to him, the personal index is more dynamic than (h) Scopus index. "If (h) Scopus index will not go down, while the personal index will fluctuate depending on the level of the researchers' activity because the evaluation is conducted only a few years. Hence, if it's been too long, it will not be used. The more researchers research and indexed, the indexing will go up. However, if researchers are not actively researching, then the indexing will go down. So, researchers should not stop the research and publication," he added.

After conducting the Monitoring and Evaluation, Tel-U has to make the improvements on several recommended aspects. "For the common good, what has been discussed and recommended should be addressed. However, this improvement will not be too difficult to be done because Tel-U's management is considered already settled" he added. "ini tidak terlalu sulit kok, karena secara manajemen Tel-U sudah *settle*," pungkas Kuncoro.❖



# Self Help Builds a Village to be Independent and Advanced

In addition to teaching and research, Tel-U has also implemented the last point of the Three Pillars of Higher Education (Tri Dharma Perguruan Tinggi), i.e. Community Service. The community service programs have been implemented and focused on the service for the citizen in the South Region of West Java. Currently, there are 33 community service proposals exploring the South Region of West Java and produce 15 papers as the community service outcome that will be published in several journals.

Thursday (6/11), Directorate of Research and Community Service (Direktorat Penelitian dan Pengabdian Kepada Masyarakat, PPM) held a Community Service National Sarasehan titled "Reap the Local Wisdom with the provision of Digital Technology, Creative Economy, Culture and Gender Equality in Developing Villages of South Coast Region of West Java ". This was activity in collaboration with the Association of Indonesian Professors (Persatuan Guru Besar Indonesia, Pergubi) West Java.

In addition to the panel discussion related to the condition of South Region of West Java, there were also held a workshop on the category of the development of villages in the South Region of West Java, namely Cultural Village, Creative Economy Village, Digital Village, Gender Friendly Village, Tourism Village, Religious Village, and Food Processing Village.

"The reason for choosing the South Region of West Java is because it has a lot of potentials. Besides this program is not only being emphasized for the academicians but also involving the exchange students from South Korea and Malaysia" as stated by Rector of Telkom University, Prof. Moch. Ashari, M.eng., Ph.D. in the opening ceremony of the event.

This Saresehan was a meeting among elements of government, industry, academia, and communities related to the development of South Region of West Java in revealing various problems and programs undertaken. There were five speakers on this panel discussing the problems and the program

Foto. internet



undertaken. Those five speakers were Prof. Dr. Cecep Darmawan, S.IP., M.Si., MH (Head of Pergubi, West Java), Prof. Endang Caturwati, M.S (Lecturer of ISBI/ Pergubi, West Java), Iwan Gunawan (Head of Officer, West Java), Imam Tohidin (Development Planning Agency at Sub-National Level, West Java) and Asep Yadi Setiawan (Fisherman Activist at Pelabuanratu Sukabumi).

"Each village has its own unique and distinctive features that make the villages exist and fluctuate. However, the village centralization made many local pearls of wisdom begin to disappear. In addition, many interests of certain groups such as political parties and capitalism that are quite detrimental to the village. Therefore, it needs a concept of empowerment (self-help) for the village to be independent and advanced,"said Cecep Darmawan.

While Endang Caturwati described the potential of some best villages in Indonesia that can generate ideas and creativity to increase the resources in these villages. Some are relying on its tourism potential, the beauty of its natural environment, art and culture, and many others.

In addition, Iwan Gunawan expressed the hope of the Head of Officer, West Java Province that there will be no longer gap between the North Region of West Java which is quite developed and the South Region of West Java which is still developing in many aspects. According to him, the business potential of the South Region of West Java is quite big, especially if the facilities, infrastructures, and technology are able to take a role into the development of the villages.

"The village entrepreneurship should be re-driven by increasing the role of

the local markets. The intervention of capitalist corporations from urban areas should be avoided. Therefore, we offer the Village Entrepreneurship Development (Penumbuhan Wirausaha Desa, Perades) where the village itself becomes the center of the incubation. We welcome if other elements and sponsors want to join in order to improve the quality and quantity of Small and Medium Enterprises (SMEs) in the village,"he explained.

The next speaker was Asep Yadi Setiawan a fisherman and environmental activist in Teluk Pelabuanratu. He told about the various phenomena experienced by the local citizen starting from the decrease of the number of fish that have been caught, pollution and industrial waste in the sea, to the fisherman's living condition that is not being better. Asep believes that the village potential, particularly in Sukabumi, is not merely depended on the result of the fish catching. This belief comes after undergoing the community service program with Telkom University lecturers in utilizing the chart to catch the fish into a tourism and seafood culinary business chart.

Finally, as a representative of the government, Imam Tohidin conveyed that during this time, West Java Provincial Government has tried to equalize the

development. Starting from building various facilities and infrastructure up to the growth centers in the three areas of the south coast of West Java, namely Pelabuanratu, Rancabuaya, and Cidaun. "Currently, the development is focused on the South Coast of West Java development. This is confirmed by Regulation no. 12 the year 2014 on the Management Development & Regional Development of West Java and Local Regulation no. 20 the year 2010 on the Development of South Region of West Java. We also expect to cooperate with Telkom University especially related to the concept of Internet Village because it also relates to West Java as a Cyber Province,"he explained.

Responding to that, the Director of Research and Community Service Telkom University, Dr. Palti Marulitua Sitorus, M.M. stated that Telkom University is ready to be a liaison between various elements. Moreover, Tel-U already has the road-map of the community service program particularly in the South Region of West Java from Pangandaran to Ciletuh. "We are collaborating with PT. Telkom and focusing on the community service program for the people in the South Region of West Java. So, we actually have known what we are going to do for the community service program in the future,"he said.Palti. ❖

Foto. Internet



## ACTUALIZATION



Dr. Dasapta Erwin Irawan, MT, suggested open sources in research.

# Do not be Afraid to Do RESEARCH!

“Making mistakes in doing research is permissible but making a lie in doing the research is not allowed”. That was Prof. Adiwijaya’s statement in the Question and Answer Session of the seminar titled “How to Start Research” which was held on Tuesday, September 12th, 2017 on the 5th floor of Manterawu Building, Telkom University. This seminar was one of the agendas in Tel-U Literacy Event 2017 and successfully attracted students and researchers to come.

Passions for doing research in Indonesia is considered have not been conducive so that some research beginners face many difficulties in starting their research. Related to this, Prof. Adiwijaya suggested “Do not be afraid of doing research. The first thing to do is by joining certain research communities. A researcher should actively join and participate in certain

communities such as Twitter and even blog to train our writing skill. We can write many little things that are important to us. Then it will turn to be the state of the art for our research. Then start looking for the review literature by looking at previous studies because we do not have to do research from the very beginning. A literature review is a way we look in the mirror to expand the viewpoint so as not to get caught up in research that has been done”.

In addition, Prof. Adiwijaya also explained the way to create a research and publication roadmap for a research beginner. First, the ability to communicate which is gained by doing a lot of reading and learning. Second, being sensitive to the community’s trend or what is the issue around. Finally, making assumptions that are able to be argued and reviewed. “Let’s take a look at Shimago to see the types of journals that fit into

the topic of our research to be published,”he added.

Meanwhile, a researcher from Bandung Institute of Technology, Dr. Dasapta Erwin Irawan, MT, revealed, that the researchers should not be afraid of doing research because the first copyright of scientific work (thesis and dissertation) is in the hands of the authors as listed on the cover. “We do not have to be afraid of doing research because the copyright of our research is in our hands, not in the hands of the supervisors. Even what happened in

many other countries is that a research proposal is being published to prevent a plagiarism. That is quite different to many people in our country who are mostly hiding the proposals to prevent the plagiarism. In fact, publishing a research proposal is recommended to avoid the plagiarism.”

Furthermore, this Hydrogeology researcher conveyed the importance of open science “If we have a good data to share, then why not? Unless our research is a project funded by a company with strict agreements that should not be disseminated. Now is the era of open data, open method, open source to open license. When we are going to do a research, but it’s hard to find the references from journals because we have to pay, then it does not matter using the free ones. So, do not make it as a trouble in looking for the references or paid references so that it becomes our barrier to do research,”said Dasapta. ❖





# TEKTRIKA

JURNAL PENELITIAN DAN PENGEMBANGAN TELEKOMUNIKASI,  
KENDALI, KOMPUTER, ELEKTRIK, DAN ELEKTRONIKA

CALL FOR PAPERS EDISI JANUARI DAN JULI

## TOPICS

Telekomunikasi | Kendali | Komputer  
Elektrik | Elektronika

## MORE INFORMATION

Untuk informasi dan pendaftaran  
Silahkan kunjungi kami di  
[www.tektrika.org](http://www.tektrika.org)

Pengiriman dapat dilakukan kapan saja  
ke email [redaksi@tektrika.org](mailto:redaksi@tektrika.org)



Fakultas Teknik Elektro  
Universitas Telkom



ACTUALIZATION

# Communicate the Products to the Community

Three research teams of Telkom University Candidate of Beginner Technology Based Enterprise (Calon Perusahaan Pemula Berbasis Teknologi, CPPBT) accepted Monitoring and Evaluation from the Ministry of Technology and Higher Education and National Standardization Agency (Badan Standard Nasional, BSN) on Tuesday, November 14th, 2017 on the 2nd floor of Bangkit Building, Telkom University and this event has also presented Dr. Wahyu Purbowasito and Nurul Fadhila, STP., MP. as the speakers.

Presentation from member of  
receiver CPPBT grant 2017.



The three reviewed prototypes of the CPPBT Tel-U were EggQ (a device for the detection of egg quality and its freshness based on Android), Glucometer (non-invasive blood sugar meter), and Hbey (non-invasive hemoglobin measurement application for anemia detection at pregnant mother). According to Wahyu Purbowasito, it is time now to utilize the Internet of Things (IoT) as the main base to help simplify human life to become more qualified, not only using IoT as a tool but also touching the humanity.

"Indonesia has a demographic bonus that can be a positive thing or even increase the social burden. Tel-U has a core in Information and Communication Technology (ICT). How this can be a bridge to communicate technology in accordance with the needs (demand) of society, in order to have the same platform and lead a more efficient life with IoT. This CPPBT research should be communicated in a more intense direction. The thing to avoid is the confusion to use existing technology in order to provide benefits for the community," he said.

Based on the Technology Readiness Level (TRL), although CPPBT research is not ready to be marketed the direction of marketing is seen and what is needed is just a refinement. The assessment parameters in the CPPBT study are certification and standardization, including Intellectual Property Protection (Kekayaan Intelektual, KI) for product prototype created.

"Some of the following are important. Certification, for example, to support the legality of products that have been made, such as marketing authorization. Then, standardization is important so that the

product has parameters that match the inventor's desire, especially if the product is then produced by another company. Includes KI protection, so that if when it is produced then no one can imitate or claim. Moreover, certification for products in the health sector is important because there are certain parameters to determine the label 'healthy' or 'unhealthy'," said Wahyu.

Although only a year, CPPBT research is encouraged in order to continue to a higher

business incubator at Bandung Techno Park (BTP), which has entered its fifth year.

"We do not know where the idea came from, but let's start by learning how to conceptualize ideas and how to communicate them to the public. Let's start refining the product until we are able to skill the product up. Not only the technical side but also start thinking about the other side, such as socio-engineering and communication with potential users. No matter how good the



Dr. Wahyu Purbowasito and Nurul Fadhila, STP., MP

level even to enter the industry, one way is through a business incubator. The role of business incubator here is to help skill up the product, such as taking care of legality problem to find the prospective investor. Tel-U itself has an IBT research program through a

product is made, if we can not communicate it to the community, it will not be able to be used. The idea does not have to be original, but it can also be a refinement of the existing thing for the better one. For example, replace the goods that have been imported," added Wahyu. ❖



# Choose a Journal that Suits the Research Topic!



Nelly Arifyani Explanation about Springer Publisher Excellence.

All scientific research results must be published to be known by the public. In addition, research publications can become an evidence for scientific development as well as increase the level of Academic Functional Position (Jabatan Fungsional Akademik, JFA). Unfortunately, in addition to a small interest in doing research, the ability to choose the appropriate publisher to publish journal is also considered low.

To publish the results of the study, there are many international publishers to choose from, for example, Springer, Elsevier, Emerald, ScienceDirect, and others. However, there are some considerations to be taken when publishing the results of the research to the publishers. This was conveyed by the Emerald Business Manager, Irwan Sukardi to Telkom University students and lecturers on Friday, September 15th, 2017 in "How to Publish Paper" Seminar. This seminar was one of the Tel-U Literacy Event 2017 which was held on the 5th floor of Materawu Building, Telkom University.

"To publish a paper, the author should consider several things. First, the suitability of journals with paper topics. Second, the scoop

and its purpose. Third, the journal that has the shortest subject area. Fourth, build a relationship with the journal. Next, follow the instructions from the journal. If it has been fulfilled, just send the paper,"he said.

In addition, Irwan suggested paying attention to the impact factor of the selected journal. Typically, the impact factor for engineering field with the social field is quite different, since the scope of the social sphere usually differs from country to country. While the engineering field tends to be the same. "One of the problems in Indonesia in terms of writing, usually the lack of confidence to write in a foreign language," said Irwan.

There are several reasons why a paper is declared qualified and worthy to be in certain journals, those reasons are the paper is original, relevant, argumentative, methodological, structured, and many others. In addition, in publishing the paper, the author must have a publishing ethics. First, establishing good communication through email or other means, with the journal manager when sending a script. It is important for the author to know if there is a part of the paper that should be revised, recommended to another journal, or rejected. Second, sending a single paper only to a single journal, therefore the same paper cannot be sent to more than one journal at a time. Last, do not ask for tutorials to other editors to revise the paper because a competent editor has been prepared by the journal to revise the paper.

Meanwhile, one of Springer Publisher representative, Nelly Arifyani revealed



Irwan Sukardi explain step by step in publishing paper.

that a good paper is not the one that successfully published but also readable to the public. If it has been realized, then this proves that the academicians (lecturers and researchers) have been doing Tri Dharma of higher education. "A lecturer has three duties, those are teaching, researching and community service. They usually will be more productive to do research and write papers when pursuing doctoral degree especially abroad. The open access to the information related to journals, how to choose publishers and other information make the researchers more eager to publish their scientific work,"she said.

Nelly also described that Springer is one of the most chosen places for authors to publish their papers because it has an Author Map. The Author Map is useful for checking the ongoing researches and

the field that close to the research. So the researchers will be able to know whether there is a similar research to the fields that are going to be the topic of the research. In addition, she also stated that Springer has a journal with the highest impact factor in the world named Nature Journal.

"Nature Journal has been 170 years and the 41st highest impact factor in the world. Because some of its authors are Nobel laureates, so Springer is widely cited," she said.

It has been proven that there are many facilities that can be utilized to disseminate the results of scientific works. However, what needs to be considered is the originality of the scientific works to be published, plagiarism should be avoided. So what are you waiting for! Start writing and specify the journal!!!!❖



Dr. Uwes Fatoni explain how to install Mendeley application

## Bibliography Corresponds to the Reference, the Paper is Easy to be Cited

**Writing a paper is part of a researcher's obligation to make his or her thoughts readable by others. Unfortunately, some novice authors often forget citation as one of the most important aspects of a research.**

**Whereas citation is the determinant of whether a paper is considered plagiarism or not. One of the novice writers' mistakes is the lack of accuracy in attaching the references. Fortunately, currently, there is an application that serves as a citation and reference manager named Mendeley.**

**T**herefore, the School of Communications and Business (Fakultas Komunikasi dan Bisnis, FKB) Telkom University collaborated with The Association of Publisher for Communications Science Journal (Asosiasi Penerbit Jurnal Ilmu Komunikasi, APJIKI) held a Scientific Article Citation Training on Thursday, August 24th, 2017 at Manterawu Building, Telkom University. The training invited the editor of Communication Science Journal of UIN Sunan Gunung Djati Bandung who is also the Indonesian Journal volunteer, Dr. Uwes Fatoni who delivered "Management Literature" and how to use Mendeley.

"Mendeley is necessary for our journals because there are still many authors who are unfamiliar with how to include the right citation. Mendeley's downloading process could be tiring, but with this link, dissemination and sharing of sources with others become easier. Even if necessary, students can be recommended to use Mendeley to improve SINTA and to know the works of the lecturers,"he stated.

Mendeley has been inspired by an effort to integrate "Citation and Reference Manager" into a social network. With this kind of network, researchers from different parts of the world can collaborate and



# Using Mendeley

share research data. The Mendeley software is available in two versions, namely Desktop Edition and Institutional Edition. For Mendeley Desktop Edition, it can be obtained for free by going to [s.id.mendeley.com](http://s.id.mendeley.com) and it is very compatible with MS Word word processing program (2003,2007,2010), Mac Word (2008,2011), Open Office.Libre Office (3.2 ) as well as Bib Tex.

"Mendeley is like a Facebook that can be accessed via mobile when we need a reference. In addition, through Mendeley, we are also able to create groups for each author with profiles, reviewers, and citation. Using Mendeley is like selling brownie cake, the cake is in Bandung but it is sold to Jogjakarta, Jakarta and other places. So that the benefits are for many people be experienced,"he added.

Dr. Uwes not only trained how to use Mendeley but also introduced Publons applications that can give appreciation to the journal managers. He also added that the appreciation is not only given to the author but also to the researchers, reviewers, and journal editors. However, all we have to do is register the journal in the form of OJS (Open Journal System) and its address will be requested.

This activity is attended by the managers of journals incorporated in APJIKI, including Journal of Communication Science Telkom University, LISKI. There also presented Chairman of APJIKI, Dr. Puji Lestari and Vice Dean II FKB, Dr. Syarifuddin. ❖

**I**t is easy to make references for bibliography by using Mendeley. First, go to [www.mendeley.com](http://www.mendeley.com) and then sign-up. Second, download the Mendeley app on the site and install it on your laptop or PC. Third, verify the registration via emailed messages used in the registration process. Next, start the application by creating a library by downloading articles, journals from several sources such as ScienceDirect, Springer-Link, Ebsco, and others. Then, do the metadata validation of the articles or journals that have been obtained in order to ensure the source we obtained is true and in accordance with the author. The way to validate the articles or journals is by clicking the 'Details are Correct'. Next, to connect Mendeley with Ms. Word, it is necessary to install Mendeley plugins by clicking on the Tools menu in Mendeley app, select Install Ms. Word Plugin. Then, create a quote in our writing in Ms.Word, by clicking the References menu in Ms.Word, select Insert Citation. After that, select the journal or article to be quoted by clicking on the article (search in the library).

urthermore, just create a bibliography at the end of the writing by clicking the References menu, select Insert Bibliography, then the list of libraries will be formed automatically. We can change the Bibliography style for example from Harvard style (eg Sunardi et al, 2014) to Vancouver (which use number [2]). The steps that must be done is to click References, select Style and adjust to the desired style, then it will automatically change the Bibliography style. If from the beginning of the writing we include reference citations systematically, then the results will appear to be arranged, presentable and complete. Although some references might not appear on the Internet, we still can insert those references manually by using this program, so it still can be written in the bibliography. ❖





ACTUALIZATION

## PLAGIARISME

### It is Better to Prevent It Rather than Making Mistakes

**T**he sanctions for plagiarism are frightening and make plagiarism itself as a frightening specter in the academic field. However, many people are unaware of doing plagiarism in the making of scientific work. Moreover, most of the students are indicated of plagiarizing in writing papers. Moreover, the action of plagiarism can be done intentionally or

unintentionally as described in Law no. 17 of 2010 on Plagiarism.

"Plagiarism is an act of taking other people's idea intentionally or unintentionally, in a whole or in a part, and not declaring the source appropriately and adequately, "as stated by the Instructional and Public Relation Librarian UPH, Dhama Gustiar Baskoro, SS., M.Pd. in the Seminar of

"Plagiarism & Citation", held on Wednesday, September 13th, 2017 on the 5th floor of Manterawu Building, Telkom University. This activity was a part of Tel-U Literacy Event 2017.

According to Dhama, there are several reasons why a person does plagiarism. For example, being under pressure, having low interest in the research topic, being



unable to conduct a research, and getting an easy access to plagiarism. "According to Mokokama Mokhonoana, Plagiarism is the fear of a blank page ie the fear of no idea to write. There are several types of plagiarism that are rampant among academics, such as ghostwriters, copy paste arbitrarily, reference manipulation or too many quotes used in the paper. Those types can make us being aggregate of utilizing other people's work while using other people's works should be no more than 10% of our work,"stated Dhama.

The solution to avoid plagiarism can be done by using the correct citation styles such as using APA Style, Vancouver, Chicago, Turabian, etc. and also by using Citation & Reference managers like Mendeley, Zotero, Bibme or e-turabian. Second, by attaching the accurate reference for the paper such as using google syntax like site: edu, inblogtitle or Boolean NOT (-). Because anyone can contribute to the process of editing Wikipedia content, therefore the use of Wikipedia as a reference source should be avoided due to its inaccuracies. Furthermore, try to be relevant in writing the paper by using thesaurus.com to find the similar meanings for the searched words. Then, try to check for plagiarism using apps like iThenticate, Turnitin, Viper or Flag-Scan.

"There are some free plagiarism checking applications, such as Viper or Flag-Scan, but the apps are very limited in some aspects. It is better to spend some

money to use the paid apps in order to avoid plagiarism just like iThenticate or Turnitin because preventing the plagiarism before happen is better than letting it happen. Therefore, it is crucial to awaken the academicians' awareness about the dangers of plagiarism. Thus, it can be done by conducting anti-plagiarism seminars or by guiding them how to paraphrase and cite appropriately,"Dhama stated.

Ririana, the representative of iThenticate, described the application used by Telkom University to avoid plagiarism in a scientific work. She also stated that Tel-U has used iThenticate for 3 years and will be terminated on December 31st, 2017. Therefore, she suggested to the lecturers and students to use the application optimally.

"The iThenticate serves to detect the similarity found in our writing compared to the existing one. In fact, some publishers like IEEE, ProQuest, Emerald, Springer, and others also use iThenticate. One file detected in iThenticate has a capacity of 25,000 words, 400 pages with a size of 40 MB. Tel-U itself subscribes to 10,000 docs, and there are still 3,500 docs left until December 2017. The rest of this capacity should be used because it cannot be accumulated to the next year. In addition, one doc is worth about USD 1 million or 100 Dollars for an individual subscription. Currently, only 12 universities are using iThenticate. One of them is Tel-U,"said Ririana.❖



Dharma Gustiar Baskoro, SS., M.Pd



# Jurnal RUPA

## Jurnal Kajian Seni, Kriya, dan Budaya

"Rupa merupakan jurnal ilmiah yang menaungi kajian keilmuan pada ranah seni, kriya dan budaya. Jurnal Rupa dimaksudkan untuk dapat berkontribusi dalam mempublikasikan hasil-hasil penelitian mutakhir di bidang seni, kriya dan budaya, sebagai salah satu upaya dalam mendukung perkembangan ilmu pengetahuan yang sejatinya terus mengalami dinamika pertumbuhan yang tak pernah surut."

# CALL FOR PAPERS

Send quires to : [jurnalrupa@tcis.telkomuniversity.ac.id](mailto:jurnalrupa@tcis.telkomuniversity.ac.id)

### Syarat dan Ketentuan :

1. Naskah merupakan hasil penelitian lapangan atau pustaka, kajian/ telaah analisis-kritis terhadap seni, kriya dan budaya, serta berupa kajian/ telaah teoritis maupun metodologis dalam pemikiran seni, kriya dan budaya.
2. Naskah ditulis dalam Bahasa Indonesia dengan abstrak Bahasa Inggris. Jumlah halaman minimal 15 dan maksimal 20 halaman kertas ukuran A4, spasi 1.5 dengan jenis huruf *Palatino Linotype* (Judul naskah menggunakan font 24; dan untuk nama pengarang, abstrak, dan teks artikel menggunakan font 12).
3. Urutan penulisan artikel: Judul, nama penulis lengkap diikuti di bawahnya dengan departemen/ instansi tempat penulis bekerja, dilanjutkan dengan 3-5 kata kunci.
4. Sistematika penulisan artikel ilmiah: Pendahuluan (mencakup uraian Latar Belakang Masalah, Permasalahan, Kerangka Pemikiran/ Landasan Teori); Metode Penelitian; Hasil dan Pembahasan berupa Pembahasan yang bersifat analisis-kritis dan telaah; Kesimpulan yang mengemukakan jawaban atas permasalahan yang dijadikan fokus kajian; dan terakhir Daftar Pustaka.
5. Abstrak ditulis antara 100-150 kata.
6. Catatan-catatan berupa referensi ditulis secara lengkap sebagai Catatan Perut, sedangkan keterangan penulis yang dirasa penting untuk dicantumkan, seperti makna/ arti istilah ditulis sebagai Catatan Akhir (*endnote*).
7. Kutipan lebih dari empat baris diketik dengan spasi tunggal dan diberi baris baru. Kutipan kurang dari empat baris dituliskan sebagai sambungan kalimat dan dimasukkan dalam teks memakai tanda petik.
8. Daftar Pustaka diurut secara alfabetis dengan nama belakang lebih dulu baik untuk nama penulis Indonesia maupun dari luar negeri. Daftar Pustaka hanya memuat literatur yang dirujuk di dalam naskah saja. Penulisan referensi sebagai contoh berikut: nama belakang penulis, tahun terbit di bawahnya, diikuti dengan judul buku dicetak miring dan judul artikel ditulis si salam tanda petik diikuti dengan judul jurnal atau majalah atau judul buku bunga rampai yang dicetak miring, baru nama kota penerbit, dan terakhir nama penerbitnya. Lihat contoh di bawah ini:  
  
Brook, Peter. 2003 *Percikan Pemikiran tentang Teater, Film, dan Opera*. Terjemahan: Max Arifin. Jakarta: MSPI.  
  
K.M., Saini. 2001 *Kaleidoskop Teater Indonesia*. Bandung: STSI Press.  
  
Leahy, Louis. 2005 "Sains dan Pencairan Makna". Diskursus Jurnal Filsafat dan Teologi. Vol. 4 No. 1, April.  
  
Wartika, Enok. 2004 "Proses Tradisi Lisan dalam Melestarikan Legenda dan Mitos Situ Lengkonng Panjalu Ciamis." Tesis Program Studi Ilmu Sosial Bidang Kajian Komunikasi. Bandung: Pascasarjana. Universitas Padjajaran.
9. Penyertaan Foto atau Gambar dalam naskah, harus disertai keterangan Sumber serta Tahun Pengambilan atau Pembuatan Foto atau Gambar tersebut.
10. Pengiriman naskah dilakukan dengan mengirimkan pada email redaksi jurnal rupa : [jurnalrupa@tcis.telkomuniversity.ac.id](mailto:jurnalrupa@tcis.telkomuniversity.ac.id)
11. Naskah yang dikirimkan ke redaksi Jurnal Rupa belum pernah dipublikasikan di media cetak apapun dan jurnal manapun, dibuktikan dengan menyerahkan surat pernyataan dan validasi plagiarisme, dan dikirimkan bersama dengan naskah jurnal.



ISSN Online : 2503\_1066

ISSN Cetak : 2503\_1627

# demandia

Jurnal Desain Komunikasi Visual, Manajemen Desain dan Periklanan

Jurnal "demandia" merupakan media publikasi cetak dan elektronik yang memublikasikan tulisan-tulisan hasil kajian dan penelitian dalam bidang **desain komunikasi visual, manajemen desain dan periklanan** yang terbit dua kali setahun (Maret dan September). Jurnal yang dikelola oleh **PPM Telkom University** ini bertujuan untuk mensosialisasikan dan mengembangkan keilmuan tersebut untuk meningkatkan ilmu pengetahuan demi kesejahteraan Bangsa Indonesia.

**Kami mengundang para dosen, praktisi, mahasiswa dan pemerhati sosial untuk dapat berpartisipasi dengan mengirimkan hasil penelitiannya dalam bidang Desain Komunikasi Visual, Manajemen Desain dan Periklanan.**



## Artikel ditulis dengan ketentuan berikut:

- Redaksi menerima sumbangan artikel dalam bentuk softcopy dalam format Microsoft Word (doc/docx), beserta surat pernyataan keaslian serta cover letter ke alamat redaksi : jurnal@tcis.telkomuniversity.ac.id
- Untuk menjaga keaslian naskah, penulis wajib mengirimkan surat pernyataan bahwa: "Artikel merupakan hasil penelitian penulis dan tidak mengandung plagiarisme. Isi artikel adalah karya asli penulis yang belum pernah dipublikasikan di media cetak atau online lain."
- Penulis diwajibkan mengikuti tata cara/pedoman penulisan jurnal demandia untuk setiap artikel yang dikirimkan. Seluruh artikel akan melalui proses review oleh Mitra Bestari Jurnal demandia. Redaksi berhak mengedit sebagian isi (tanpa mengubah makna)
- Artikel dapat ditulis dalam Bahasa Indonesia atau Bahasa Inggris yang baik dan benar. Isi artikel meliputi bidang desain komunikasi visual, periklanan dan desain manajemen.
- Artikel ditulis dalam halaman genap tetapi

- tidak melebihi 20 (dua puluh) halaman; termasuk abstrak, isi, seluruh tabel dan gambar serta daftar referensi. naskah diketik dengan program Ms Word, ukuran kertas A4, Calibri ukuran 12 pt, justify text, spasi 1,5 dengan margin atas bawah dalam 4 cm dan margin luar 3 cm.
- Artikel ditulis dengan cara esai (bukan points); disajikan dalam beberapa bagian dengan urutan dimulai dari Pendahuluan, Kajian Teori, Metode Penelitian, Hasil dan Diskusi, Kesimpulan serta Daftar Pustaka. Template dapat diunduh melalui <http://journals.telkomuniversity.ac.id>.
- Daftar Pustaka ditulis berurutan secara alfabetis mengikuti sistem Harvard (lihat <http://libweb.anglia.ac.uk/referencing/harvard.htm>). Sebaiknya artikel mengutip referensi yang terbit dalam kurun waktu 10 tahun terakhir.



ISSN 2477-6106



E-ISSN 2502-2431



A graphic of a light blue tag with a barcode and a blue ribbon loop, set against a dark blue rectangular background.

INTELLECTUAL  
PROPERTY

# Tel-U Strengthens the Klinik KI

After two years, the Intellectual Property (Kekayaan Intelektual, KI) Clinic at Telkom University continues to carry out various activities related to increasing the number of Intellectual Property acquisition in the higher education. Besides accompanying the academicians to register their KI to the Ministry of Law and Human Rights (Kementrian Hukum dan Hak Asasi Manusia, Kemenkumham), KI clinic also runs its center strengthening program through incentives given by the Ministry of Technology and Higher Education (Kementerian Teknologi dan Riset Perguruan Tinggi, Kemenristekdikti). The KI center strengthening programs through Kemenristekdikti incentives is in the form of the Potential Program named UBER (Unggulan Berprestasi), 'Raih' KI for researcher lecturers in the higher education and Patent Drafting Workshop for the researcher lecturers particularly in the engineering field.





Participants of UBER and Raih KI Socialization listen to Endang explanation

Foto. Dok Klinik KI Tel-U

Telkom University has implemented two events related to UBER Incentive Program and Raih KI in 2017. The first event was "The Socialization of UBER Program and Raih KI" held on Thursday, September 28th, 2017 in Ibis Hotel Bandung. This event invited Sub-Directorate Head of the Directorate of Intellectual Property Management Kemenristekdikti, Drs. Endang Taryono. KI UBER Program itself aims at improving the acquisition of intellectual property by exploring its maximum potential which was gained from doing research and community service. However, this program is limited to the patent acquisition and simple patent. There are two types of KI UBER Program, those are Patent Registration Assistance and the Research Assistance with a Potential Patent.

While Raih KI program is considered as important for the researchers from Non-Government Institution (Lembaga Pemerintah Non-Kementerian, LPNK),

Central and Regional Research and Development Agency (Badan Penelitian dan Pengembangan Pusat/Daerah), and Research Incentive for National Innovation System (Insentif Riset Sistem Inovasi Nasional, INSINAS). The socialization of Raih KI program needs to be conducted because some Tel-U researchers have received the

financial aid from INSINAS. If there are some research results considered as having a potential patent or simple patent so that the procedure of patent registration can be covered in the socialization event.

In addition to socializing the UBER and Raih KI Program, the Intellectual Property Clinic Telkom University also held an activity to strengthen the center of the Intellectual Property Thursday, October 12th, 2017 in Ibis Hotel Bandung. This activity is a Technical Writing Workshop on Patent Drafting for lecturers of Engineering and Interior Design of Tel-U. This event invited a patent examiner from Patent Directorate, Directorate General of Intellectual Property (Direktorat Jendral Kekayaan Intelektual, DJKI), Fero Arnaldos, ST.

According to Fero, the patent application has been regulated by Law No. 13 of 2016. It is stated that patent protection period is valid for 20 years while the simple patent is

Foto. Dok Klinik KI Tel-U



Drs. Endang Taryono

## INTELLECTUAL PROPERTY

valid for 10 years and cannot be renewed. To renew the patents, we ought to do research in order to gain the inventions that are going to be registered again.

"The filing date for patent proposal will be used for three things; first, the rejection of the proposal that was late submitted, even if the proposal is withdrawn or denied (not granted any patent). Second, the calculation of the novelty of the other inventions or



Fero Arnaldos, ST

Foto. Dok Klinik KI Tel-U

patents. Lastly, the commencement date of patent protection,"he explained.

This workshop allows the Engineering and Interior Design lecturers to describe the invention that has the potential to obtain a patent in detail and clear. The researchers should have the ability to draft patents for the results of their research in which

the patent will be proposed. They should draft the patents because those who really understand the findings are themselves. The researchers should recognize the invention before drafting a patent. Then create a draft patent containing the title of the invention, technical field of the invention, invention background, invention summary, brief description of the pictures, full description of the invention, claims, abstract, and pictures and / charts.

There are two requirements for obtaining the patents, namely administrative requirements and substantive requirements. The formalities requirements consist of complete evidence, administrative requirements and physical requirements. While the substantive requirement (patentability) concerns five things namely, true evidence, has a novelty value, has an inventive step, can be applied in the industry and not contrary to the applicable law.

On that occasion, Telkom University lecturer who received a patent for one of 4G technology (Telecommunication Engineering) also shared his experience registering his patent in Japan. In addition, there was also Dr. Rina Pudji Astuti who shared her experience to get an INSINAS research grant which the invention of her research results can be registered to obtain a patent.



Participant of Drafting Patent Workshop listen to explanation of Director of PPM Tel-U, Dr. Palti MT. Sitorus, MM.

Foto. Dok Klinik KI Tel-U





Normansyah explain the important of registering brand for businessman

## To Help SMEs Register Their Brands

Telkom University Intellectual Property Clinic not only conducted the activity of strengthening the center of the Intellectual Property for lecturers and internal researchers but also provides an assistance for Micro, Small and Medium Enterprises (MSMEs) in Kabupaten Bandung. The Clinic also held a Workshop on Brand Registration for MSMEs, at Hotel Ibis Bandung on Thursday, September 14, 2017, in cooperation with Dinas Koperasi dan UMKM Kabupaten Bandung. In addition, this event presents the Substantive Inspector and Inspector of DJKI Ministry of Law and Human

Rights, Normansyah and Hendra Sulaksana. This workshop was held in two batches and followed by 100 doers of UMKM.

"KI is important for business actors so that no one can plagiarize the products we have and cause any disadvantage. One of the elements that should be protected is a brand or business brand. There are two types of brand, namely trademarks and service marks," said Normansyah.

A brand is a sign that can be displayed for free, in the form of pictures, names, words, letters, numbers, the

color arrangement in the form of two and/or three dimensions, sound, hologram, or a combination of two or more elements. There are two types of brand, those are the brands used on traded goods (trademarks) and the service brands used on traded services (service marks). In the Article 20 of Law no. 20 the year 2016, there are some rules that make a brand cannot be registered. First, it is opposite to the ideology of a country, legislation, morality, religion, or public order. For example, images of hammer and sickle, pornographic images, religious symbols, and symbols that violate the rules of the law. Second, the brand that is the description of the goods or services. For example the brand

'kopi', 'coffee' or a coffee image for the type of coffee goods. Furthermore, it does not have a distinguishing power such as its brand character is too simple or too complicated. Then, this brand has become public property or known to the public. For example commonly used alarms, radioactive symbols, even traffic signs.

Brand registration as an Intellectual Property is regulated by Law No. 20 Year 2016 ranging from the types of brands that may and may not be registered as a brand up to the reasons for accepting and rejecting the brand registration by Kemenkumham. The brand registration in Kemenkumham legally lasts for 11 months 15 days even in many cases last more than some years. The lack of human resource or the mistakes made by the registrants might become some factors cause the registration process much longer. However, for the SMEs actors, the brand registration is actually able to be collected through Dinas Koperasi dan UMKM as well as Telkom University Intellectual Property Clinic. ❖



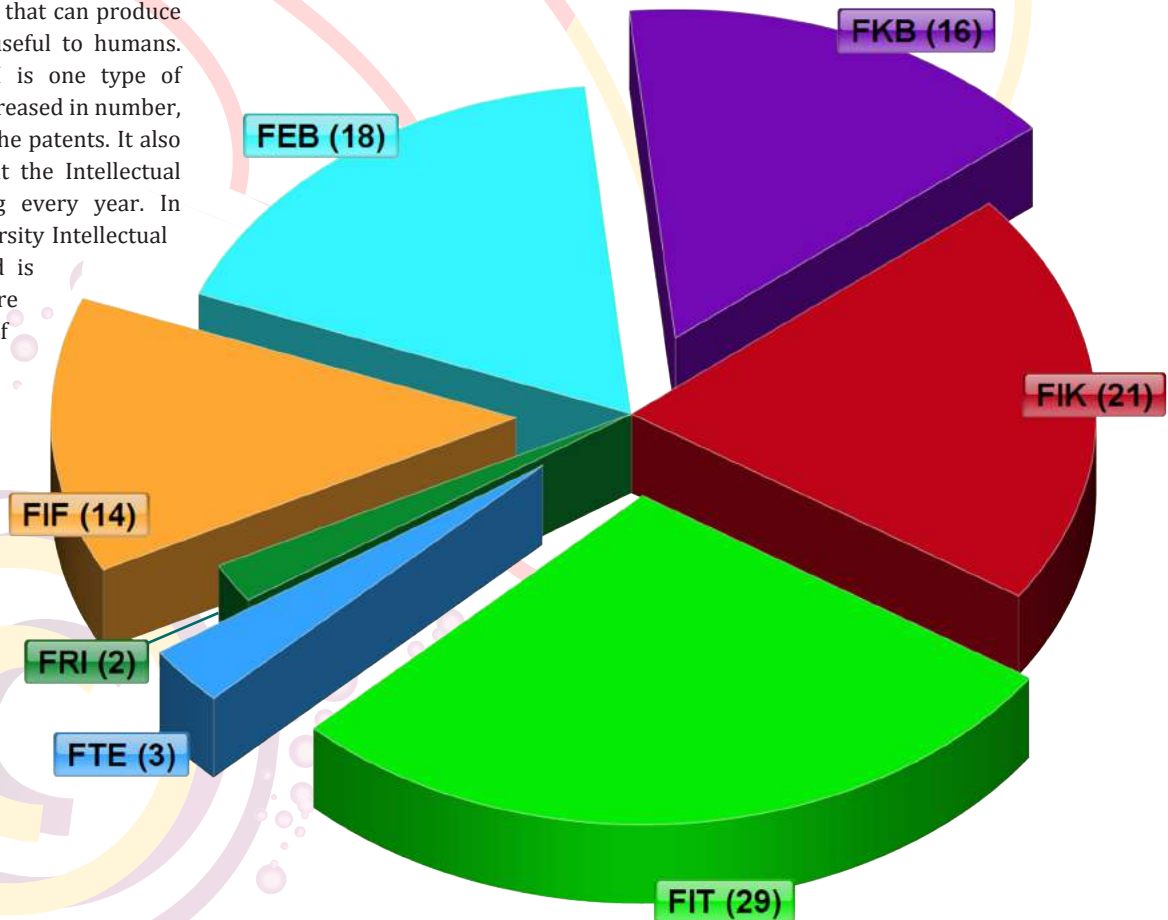
Participant of Registering Brand Workshop



## INTELLECTUAL PROPERTY (KI) 2017

# Tel-U Intellectual Property Goes Up

Intellectual Property (Kekayaan Intelektual, KI) is the result of the ability to think that can produce a product or process that is useful to humans. In the academic environment, KI is one type of research outcomes that must be increased in number, especially in the case of obtaining the patents. It also happens in Telkom University that the Intellectual Property acquisition is increasing every year. In 2017, the number of Telkom University Intellectual Property that has been registered is 231 intellectual properties. There were 103 of them certified and 108 of them were still on process. Telkom University's Intellectual Property in 2017 was increased by 60% (87 units) in the fourth quarter. The info-gram shows the number of KI earnings in each faculty with KI copyright type.❖



# Jurnal Manajemen Indonesia

## CALL FOR PAPERS



Manajemen Pemasaran  
Manajemen Sumber Daya Manusia  
Manajemen Keuangan  
Manajemen Inovasi dan Perubahan  
Manajemen Operasi

Bisnis Internasional  
Kewirausahaan dan Pengembangan Bisnis  
Manajemen Strategik  
Sistem Informasi Manajemen

[ijm.telkomuniversity.ac.id](http://ijm.telkomuniversity.ac.id)

Makalah dapat dikirimkan ke alamat email redaksi Jurnal Manajemen Indonesia. Informasi lain seputar JMI dapat anda temukan pada [ijm.telkomuniversity.ac.id](http://ijm.telkomuniversity.ac.id) atau dengan mengirim pertanyaan ke [ijm.telkomuniversity@gmail.com](mailto:ijm.telkomuniversity@gmail.com).

Makalah yang dikirimkan ke Jurnal Manajemen Indonesia adalah makalah yang belum pernah dipublikasikan sebelumnya pada jurnal ilmiah, serta tidak sedang dalam proses pertimbangan publikasi jurnal ilmiah lainnya.

# CONGRATULATIONS



**Angga Rusdinar, Ph.D**  
as Director for Research and  
Community Services



**Dr. Rina Pudji Astuti**  
as Vice Rector IV for  
Research and Student Affair